

Attachments

May 25, 2023

Agenda

Overview
“How To”
Questions

MIA 34965

Persea americana Mill.

'Alicia Cordero'

Click image(s) to enlarge and enhance. Some thumbnails may appear blurry, but will be clear when enlarged.

Show all

BRANCH

FRUIT

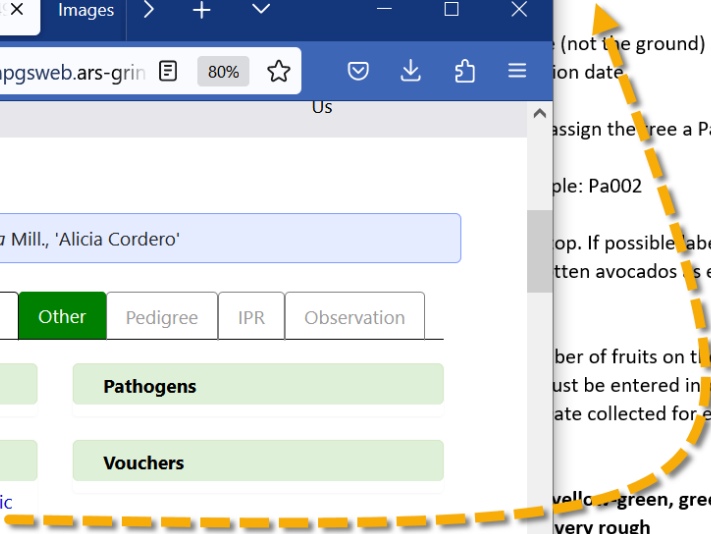
SEED



Protocol for avocado fruit phenotypic data collection

Browser window showing the details page for MIA 34965, *Persea americana* Mill., 'Alicia Cordero'. The page includes tabs for Summary, Passport, Taxonomy, Other (selected), Pedigree, IPR, and Observation. The 'Other' tab is active, displaying sections for Annotations, Pathogens, Other Links, and Vouchers. A link is visible: Protocol for Avocado Fruit Phenotypic Data Evaluation.

(not the ground) in bins, include
ion date
assign the tree a Pa number.
ple: Pa002
op. If possible label the 3 ripest f
tten avocados as extras, label the
ber of fruits on the tree (fruitsTo
ust be entered in p each tablet).
ate collected for each fruit. See f
vello... green, green, dark green
very rough
plet, each avocado will have a sar



Attachment Wizard (>= v.1.21.10.4)

Attachment Wizard v1.21.10.4

File

Attachment Type

Accession Inventory Accession/Inventory Group Order Request Method

Crop Crop Trait Crop Trait Code Taxonomy Family Taxonomy Genus Taxonomy Species

Save Save and Exit

View Existing Attachments Batch Files...

View

Large Small List Tile Details

Attachments

- MAR 1 RRG **
 - AIA/Humulus/2125417/buckweat.jpg
- MAR 5 RRG **
 - AIA/Humulus/2125421/paper.pdf
 - https://npgsweb.ars-grin.gov/trac/GG/ticket/2356
 - http://grin-global.org/
 - AIA/Humulus/2125421/mar_5_rg_03.jpg
 - AIA/Humulus/2125421/mar_5_rg_flower_01.jpg
 - AIA/Humulus/2125421/mar_5_rg_flower_02.jpg
 - AIA/Humulus/2125421/flower_02.jpg
 - AIA/Humulus/2125421/paper with pictures.docx
- MAR 15 RRG **
 - AIA/Humulus/2125442/Humulus_lupuli.jpg
 - AIA/Humulus/2125442/fruit_01.jpg
 - AIA/Humulus/2125442/doc_xmple.pdf
 - AIA/Humulus/2125442/mar_1_2018-google world.jpg
 - AIA/Humulus/2125442/google world
 - AIA/Humulus/2125442/hum_leaf.jpg
 - AIA/Humulus/2125442/hum_leaf.jpg
 - AIA/Humulus/2125442/ears.jpg
 - AIA/Humulus/2125442/paper.pdf
 - AIA/Humulus/2125442/paper.docx
- MAR 1 RRG SD
- MAR 1 RRG2022 SD
- MAR 1 RRG2 SD
- MAR 1 RRG3 SD
- MAR 5 RRG SD

MAR 1 RRG **

buckweat.jpg

MAR 5 RRG **

paper.pdf

https://npgsweb.ars-grin.gov/trac/GG/ticket/2356

http://grin-global.org/

mar_5_rg_03.jpg

mar_5_rg_flower_01.jpg

mar_5_rg_flower_02.jpg

MAR 15 RRG **

http://grin-global.org/

mar_5_rg_flower_01.jpg

mar_5_rg_flower_02.jpg

flower_02.jpg

paper with pictures.docx

Form View Grid View

Title	Description	Sort Order

Do not use Taxonomy (NPGS)

Attachment Wizard v1.21.10.4

File

Attachment Type

Accession Inventory Accession/Inventory Group Order Request Method

Crop Crop Trait Crop Trait Code Taxonomy Family Taxonomy Genus Taxonomy Species **do not use!**

View Existing Attachments

View

Large Small List Tile Details

Attachments

- MAR 1 RRG **
 - AIA/Humulus/2125417/buckweet.jpg
- MAR 5 RRG **
 - AIA/Humulus/2125421/paper.pdf
 - https://npgsweb.ars-grin.gov/trac/GG
 - http://grin-global.org/
 - AIA/Humulus/2125421/mar_5_rg_03
 - AIA/Humulus/2125421/mar_5_rg_flo
 - AIA/Humulus/2125421/mar_5_rg_flo
 - AIA/Humulus/2125421/flower_02.jpg
 - AIA/Humulus/2125421/paper with pic
- MAR 15 RRG **
 - AIA/Humulus/2125442/Humulus_lupu
 - AIA/Humulus/2125442/fruit_01.jpg
 - AIA/Humulus/2125442/doc_xmple.pc
 - AIA/Humulus/2125442/mar_1_2018-
 - AIA/Humulus/2125442/google world
 - AIA/Humulus/2125442/hum_leaf.jpg
 - AIA/Humulus/2125442/ears.jpg
 - AIA/Humulus/2125442/paper.pdf
 - AIA/Humulus/2125442/paper.docx
- MAR 1 RRG SD
- MAR 1 RRG2022 SD
- MAR 1 RRG2 SD
- MAR 1 RRG3 SD
- MAR 5 RRG SD

MAR 1 RRG **

buckweet.jpg

MAR 5 RRG **

paper.pdf

https://npgsweb.ars-grin.gov/trac/GG/ticket/2356

http://grin-global.org/

mar_5_rg_03.jpg

mar_5_rg_flower_01.jpg

mar_5_rg_flower_02.jpg

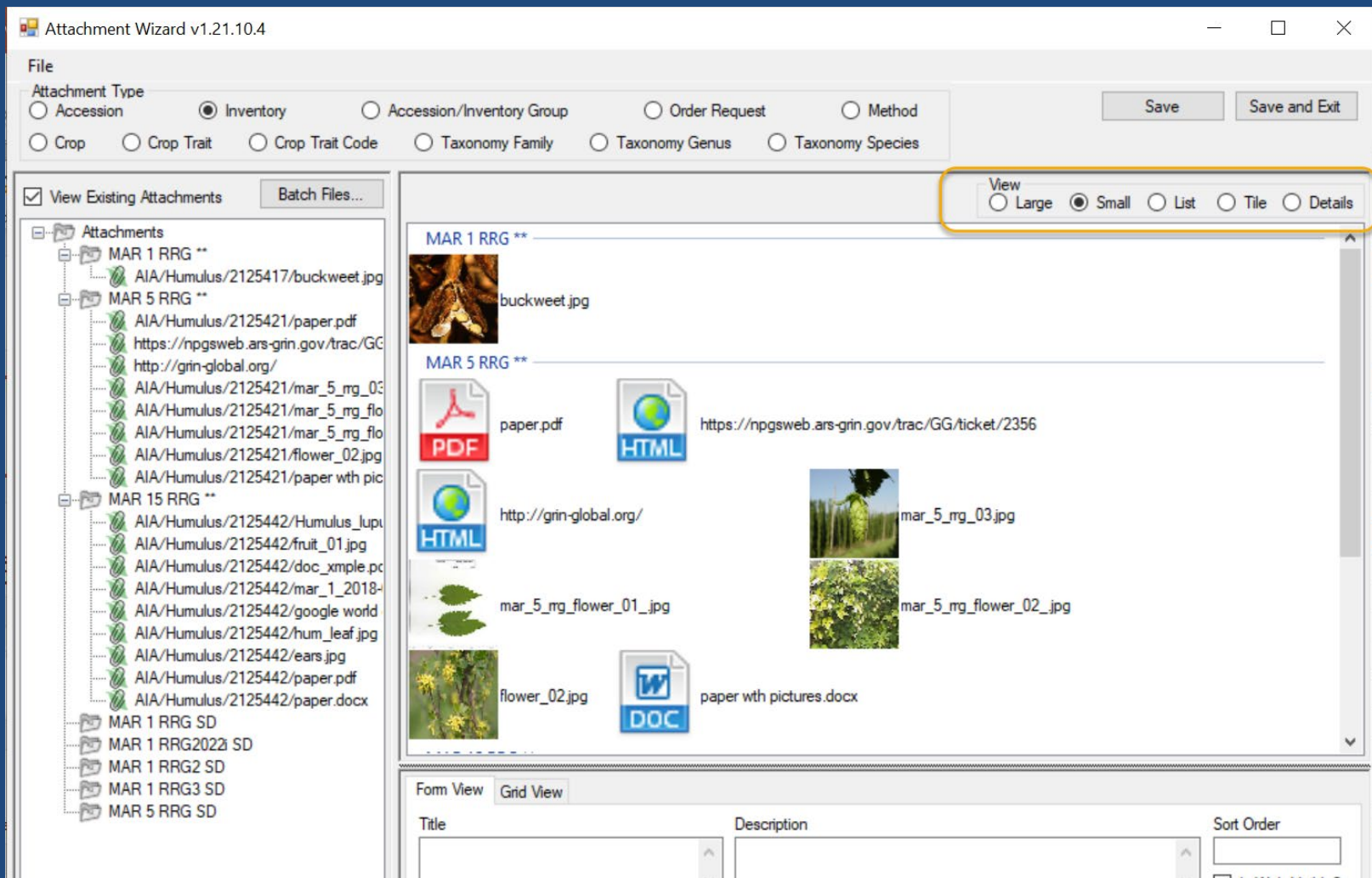
flower_02.jpg

paper with pictures.docx

Form View Grid View

Title	Description	Sort Order

Interface



Folder & File Naming Conventions – Important!

- The file name or the folder name containing the files to be attached
- ... is critically important, especially when using the Batch Method

Stop!

Attachment Wizard v1.21.10.4

File

Attachment Type

Accession Inventory Accession/Inventory Group Order Request Method

Crop Crop Trait Crop Trait Code Taxonomy Family Taxonomy Genus Taxonomy Species

Save Save and Exit

View Existing Attachments Batch Files...

View

Large Small List Tile Details

Attachments

-1

vaccinium.jpg

-1

vaccinium.jpg

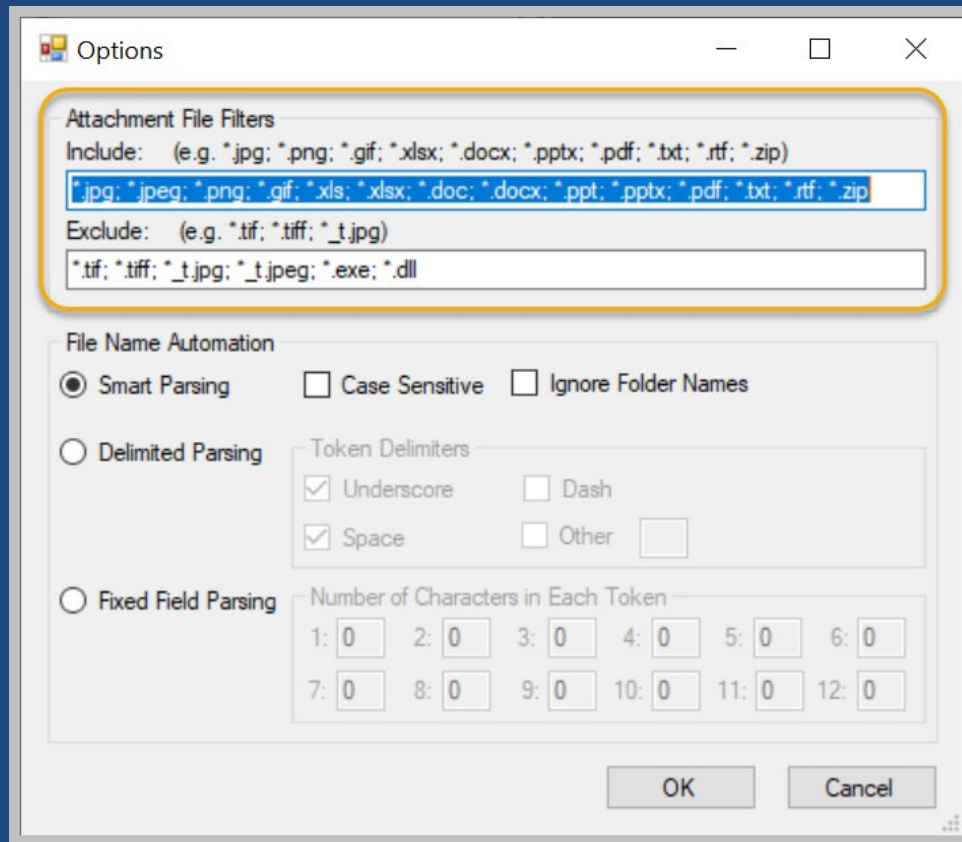
Form View Grid View

	Accession Inventory Attach ID	Accession	Inventory	Image Virtual Path	Thumbnail Virtual Path	Sort Order	Title
▶	-1		-1	C:\Users\Marty....	C:\Users\Marty....		

Column Chooser

Other Options

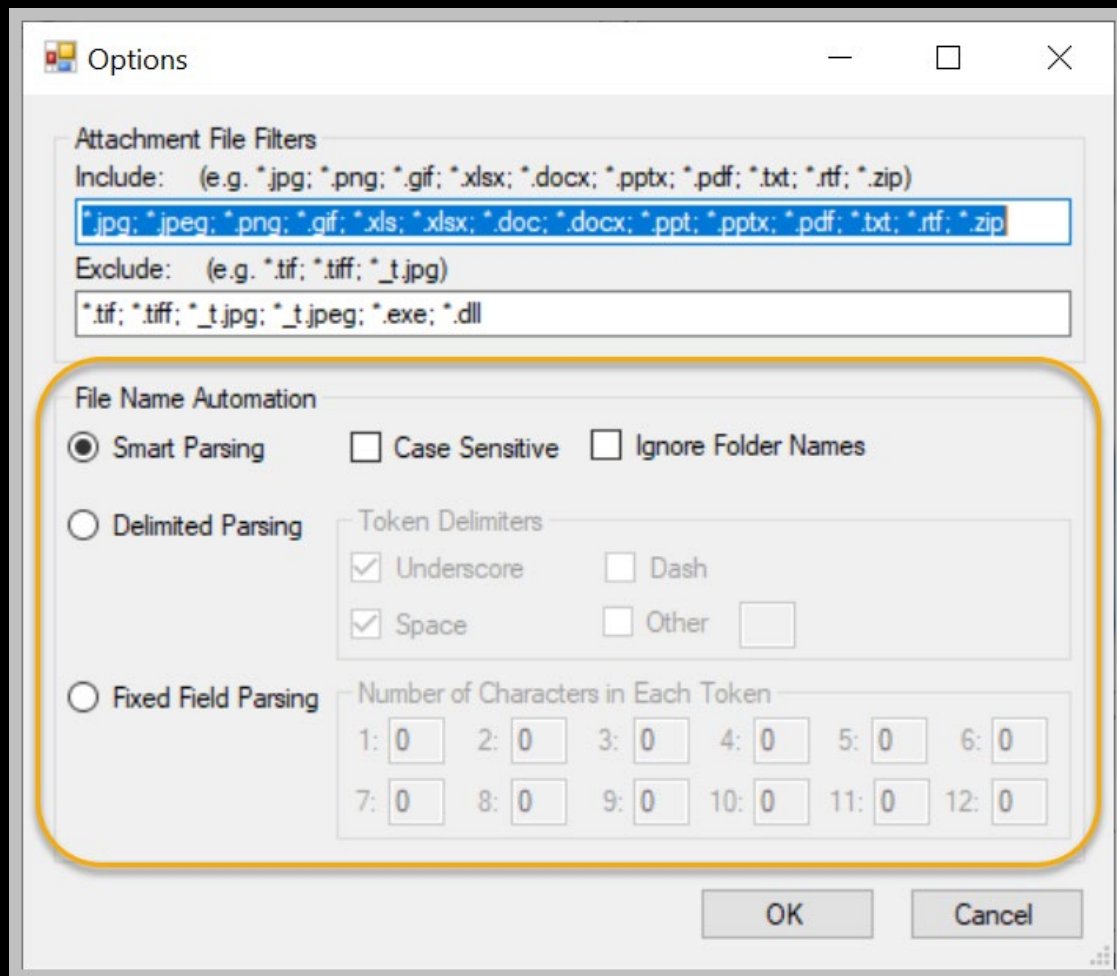
Options



Add extension
type as needed:

– ; *.JPG

Options (Parsing)



For details, see the guide at

http://grin-global.org/docs/gg_attachment_wizard.docx

3 methods for attaching files

1. Drag files directly
from Windows Explorer to an item in a CT list
2. Drag files into the Attachment Wizard
(from Windows Explorer to an item in wizard)
3. Use the wizard's Batch Files method
(opens a Windows Explorer window)

Attachment Folders

https://npgsweb.ars-grin.gov/gringlobal/uploads/images/crop_attach/RUBUS/blackberries.jpg

server name

Default Attachment Folders

GG Attachment Table	Attachment Default Path [server\folders...]
accession_inventory_attach	accession_inv_attach\INVENTORY_FRIENDLY_NAME\ *
accession_inv_group_attach	accession_inv_group_attach\GROUP_FRIENDLY_NAME\
crop_attach	crop_attach\CROP_FRIENDLY_NAME\
crop_trait_attach	crop_trait_attach\CROP_TRAIT_FRIENDLY_NAME\
crop_trait_code_attach	crop_trait_code_attach\CROP_TRAIT_CODE_FRIENDLY_NAME\
method_attach	method_attach\METHOD_FRIENDLY_NAME\
order_request_attach	order_request_attach\ORDER_NUMBER\
taxonomy_attach	taxonomy_attach\FAMILY_FRIENDLY_NAME\
taxonomy_attach	taxonomy_attach\GENUS_FRIENDLY_NAME\
taxonomy_attach	taxonomy_attach\SPECIES_FRIENDLY_NAME\

Attachment Folders

* https://npgsweb.ars-grin.gov/gringlobal/uploads/images/AIA/Humulus/2140840/apples_snow_thumbnail.png

*used at NPGS for accession/inventory attachments

Stop!

Attachment Wizard v1.23.1.26

File

Attachment Type

Accession Inventory Accession/Inventory Group Order Request Method

Crop Crop Trait Crop Trait Code Taxonomy Family Taxonomy Genus Taxonomy Species

Save Save and Exit

View Existing Attachments

Attachments

View

Large Small List Tile Details

Form View Grid View

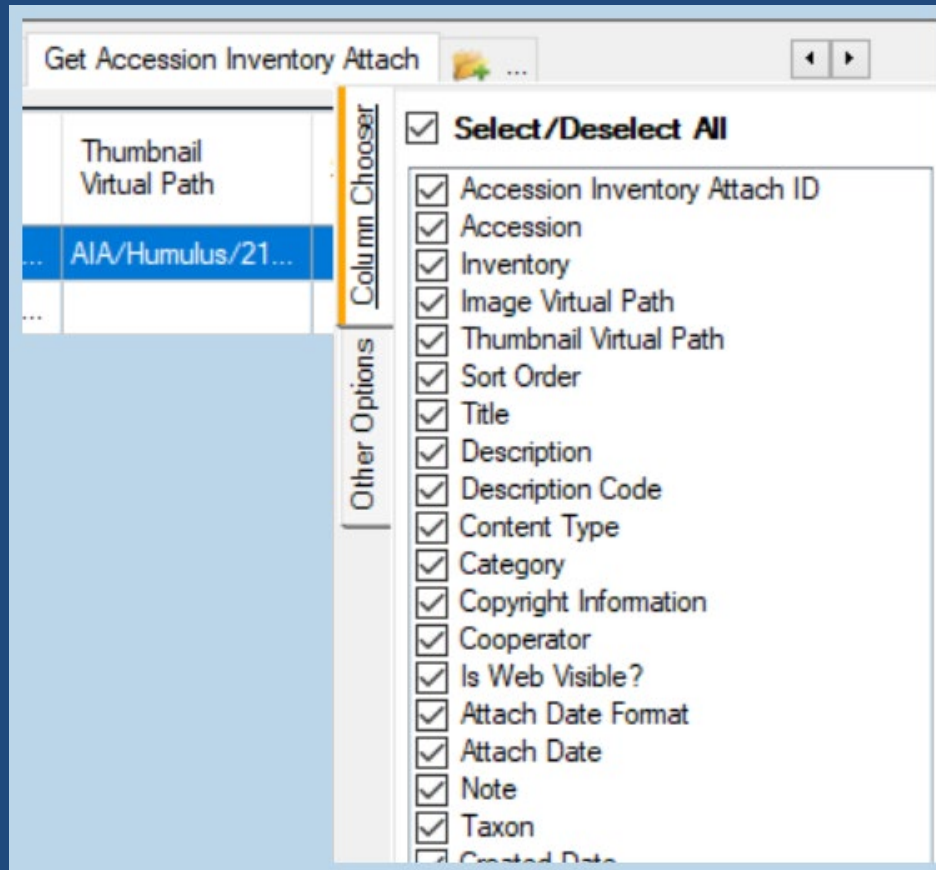
	Crop Attach ID	Crop	Virtual Path	Thumbnail Virtual Path	Sort Order	Title	Description	Content Type	Category	Is Web Visible?
▶	-1	-1	C:\Users\Marty...	C:\Users\Marty...				image/jpeg	Image attachment	

Stop!

Crop Attach ID	Crop	Virtual Path	Thumbnail Virtual Path	Sort Order	Title	Description	Content Type	Category	Is Web Visible?
-1	-1	C:\Users\Marty...	C:\Users\Marty...				image/jpeg	Image attachment	

The paths are pointing to the user's PC, not the GG server

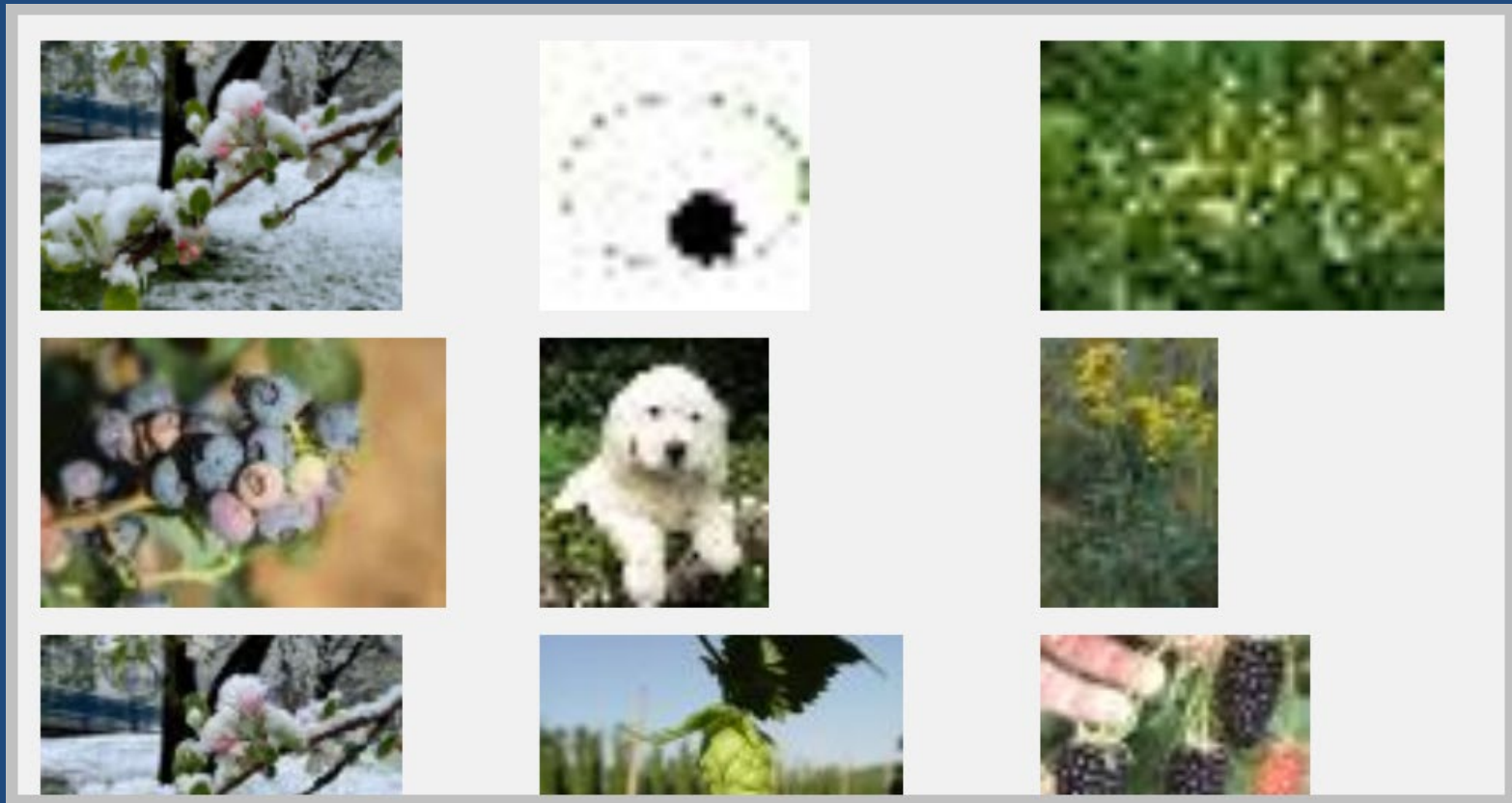
Attachment Fields



Attachment Fields:

Sort Order

Orders the display of multiple images



Attachment Fields:

Title

Currently not displayed in PW2

Attachment Fields:

Description

field displays when the image is viewed in a browser window



Attachment Fields: Description Code

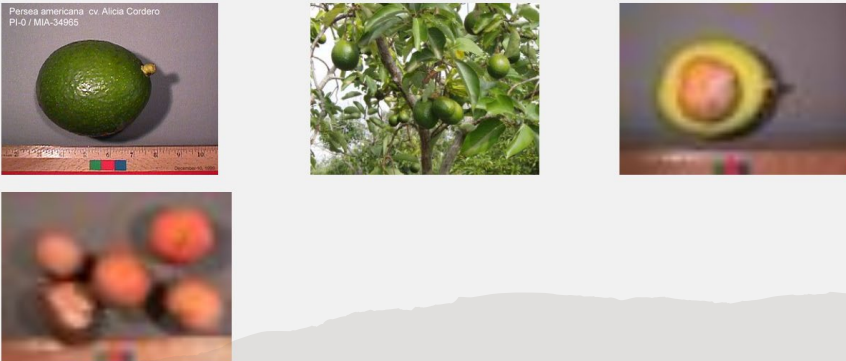
When you have multiple attachments and more than one **Description Code** has been used, the PW will display headings and filter the images accordingly

MIA 34965

Persea americana Mill.
'Alicia Cordero'

Click image(s) to enlarge and enhance. Some thumbnails may appear blurry, but will be clear when enlarged.

Show all BRANCH FRUIT SEED



Persea americana cv. Alicia Cordero
PI-O / MIA-34965

Attachment Fields:

Description Code

These codes are stored in the ATTACH_DESCRIPTION_CODE code group

GG database administrator can add/edit codes

SQL to list the codes:

```
SELECT cv.code_value_id, cv.group_name as group_name,  
       cv.value, cvl.title, cvl.description  
FROM   code_value cv  
LEFT JOIN code_value_lang cvl ON cv.code_value_id = cvl.code_value_id  
      AND cvl.sys_lang_id = 1  
WHERE  cv.group_name = 'attach_description_code'  
ORDER BY group_name, cv.value
```

Attachment Fields:

Content Type & Category

determined by the attachment wizard's logic. It is based on the image file's extension.

Examples:

	Content Type	Category
	application/pdf	Document attachment
	image/png	Image attachment

URL Links

Details for: MIA 34965, *Persea americana* Mill., 'Alicia Cordero'

Summary

Passport

Taxonomy

Other

Pedigree

IPR

Observation

Annotations

Pathogens

Other Links

Vouchers

Protocol for Avocado Fruit Phenotypic Data Evaluation

[Webpage:images & info.](#)

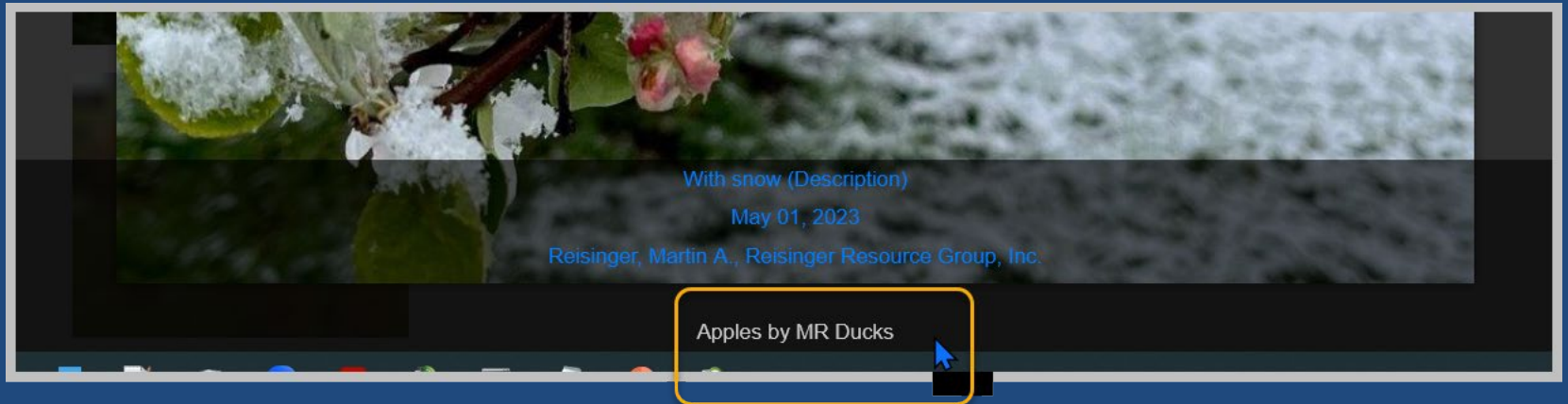


Actions

Citations

Attachment Fields:

Copyright Information



Attachment Fields: Cooperator

when supplied in the
Cooperator field, will display
below the image



With snow (Description)

May 01, 2023

Reisinger, Martin A., Reisinger Resource Gro

Attachment Fields:

Is Web Visible?

this flag field determines is the image is displayed on the Public Website (or not)

Attachment Fields:

Attach Date

- If no date data is provided,
the date displayed will default to the date attached.

(Format field is currently ignored; will be addressed)

Attachment Fields:

Note

text does not display on the Public Website (for internal use only)

Attachment Fields:

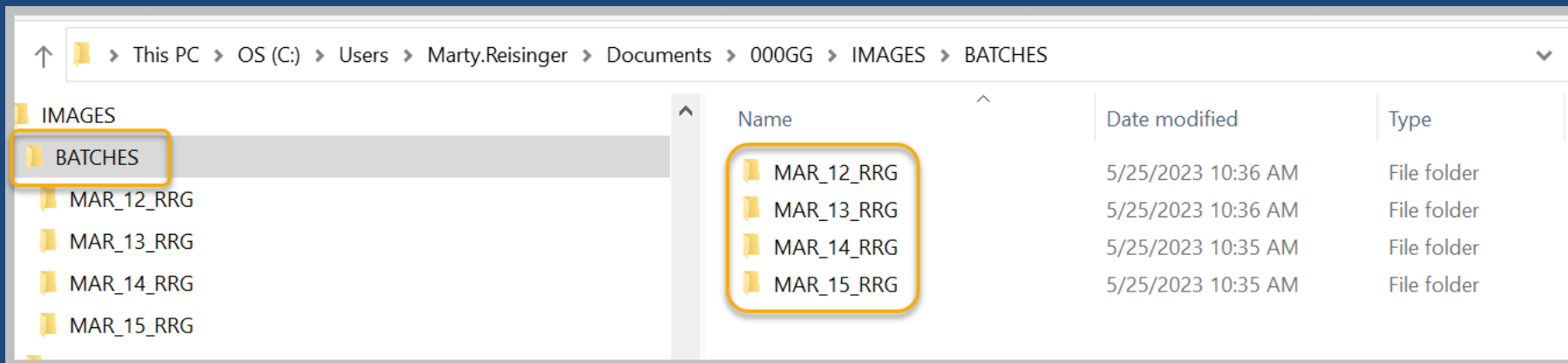
Taxon

- text field - does not display on the Public Website (for internal use only)

Batch Files

Set up folder names as needed to match items

Example:

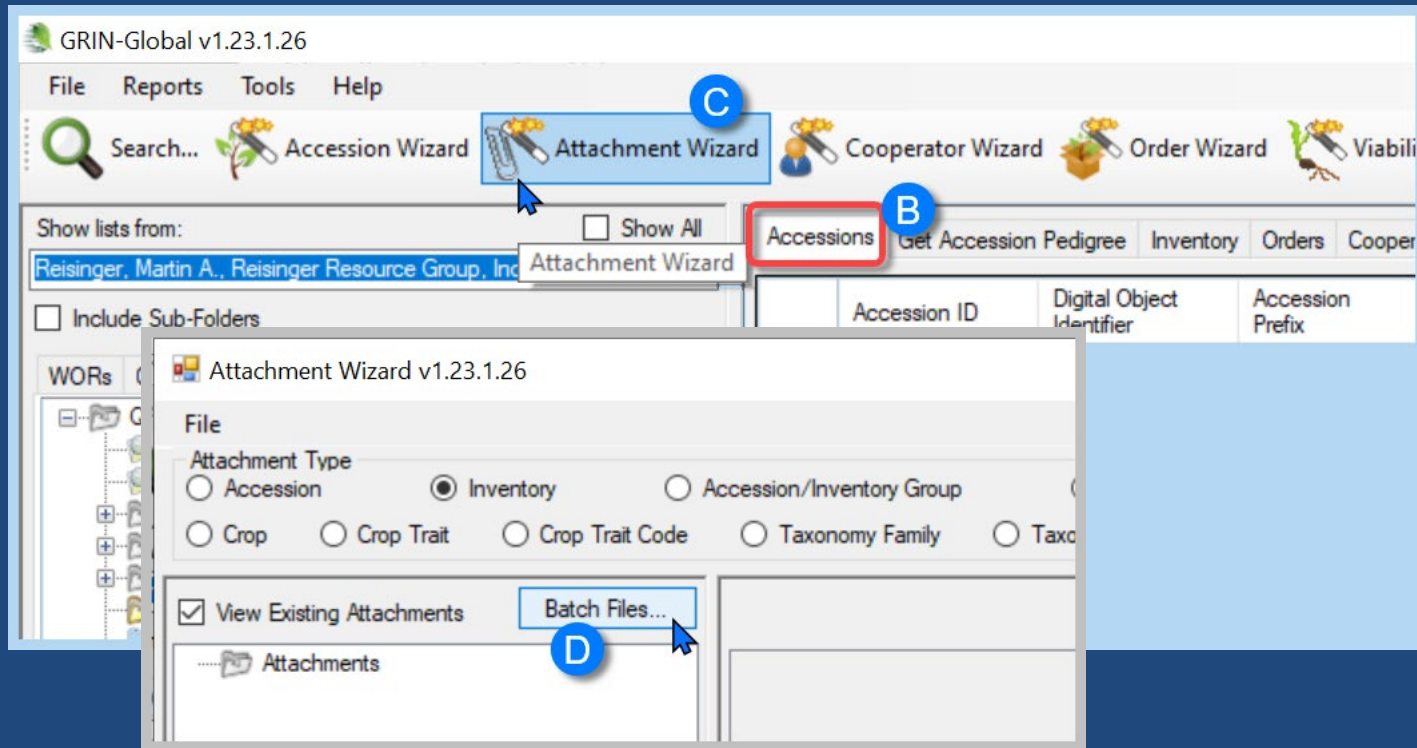


Batch Files

The screenshot displays the GRIN-Global v1.23.1.26 application interface. The menu bar includes File, Reports, Tools, and Help. The toolbar contains Search..., Accession Wizard, Attachment Wizard (highlighted with a blue box and labeled 'C'), Cooperator Wizard, Order Wizard, and Viability Wizard. Below the toolbar, the 'Show lists from:' section shows 'Reisinger, Martin A., Reisinger Resource Group, Inc' selected, with a tooltip for 'Attachment Wizard'. A red box highlights the 'Accessions' tab, labeled 'B'. The main content area shows a tree view of folders under 'QnA', including 'QnA Root Folder', 'PI 689681', 'MAR 11 RRG', 'New List (2)', 'New List (3)', 'MAR accs', and 'New List' (highlighted with a blue box and labeled 'A'). A table with columns 'Accession ID', 'Digital Object Identifier', and 'Accession Prefix' is visible on the right.

Accession ID	Digital Object Identifier	Accession Prefix
--------------	---------------------------	------------------

Batch Files



Batch Files

The image shows a screenshot of the GRIN-Global v1.23.1.26 software interface. The main window has a menu bar with 'File', 'Reports', 'Tools', and 'Help'. Below the menu bar is a toolbar with icons for 'Search...', 'Accession Wizard', 'Attachment Wizard', 'Cooperator Wizard', 'Order Wizard', and 'Viability Wizard'. The 'Attachment Wizard' icon is highlighted with a blue circle labeled 'C'. Below the toolbar is a 'Show lists from:' section with a 'Show All' checkbox and a list of options: 'Accessions', 'Get Accession Pedigree', 'Inventory', 'Orders', and 'Cooper'. The 'Accessions' option is highlighted with a red box and a blue circle labeled 'B'. Below this is a table with columns 'Accession ID', 'Digital Object Identifier', and 'Accession Prefix'. A table entry for 'Reisinger, Martin A., Reisinger Resource Group, Inc' is visible. Below the table is a 'WORs' section with a tree view. An 'Attachment Wizard v1.23.1.26' dialog box is open, showing 'Attachment Type' options: 'Accession', 'Inventory' (selected), 'Accession/Inventory Group', 'Crop', 'Crop Trait', 'Crop Trait Code', 'Taxonomy Family', and 'Taxonomy'. An 'Open' file explorer window is also open, showing the path 'This PC > Documents > 000GG > IMAGES > BATCHES'. The 'BATCHES' folder is circled in purple with a blue circle labeled 'E'. A yellow dashed arrow points from the 'BATCHES' folder to a list of files in the 'IMAGES' folder. The files are: 'MAR_12_RRG', 'MAR_13_RRG', 'MAR_14_RRG', 'MAR_15_RRG', and 'buildbetter.bat'. A black bracket groups the four 'MAR' files.

Accession ID	Digital Object Identifier	Accession Prefix
Reisinger, Martin A., Reisinger Resource Group, Inc		

Name	Date modified
MAR_12_RRG	5/25/2023 10:36 AM
MAR_13_RRG	5/25/2023 10:36 AM
MAR_14_RRG	5/25/2023 10:35 AM
MAR_15_RRG	5/25/2023 10:35 AM
buildbetter.bat	5/25/2023 10:34 AM

Save a text file with a
.bat extension;
in Windows Explorer,
double-click to run

buildbetter.bat

```
1 MD C:\Users\Marty.Reisinger\Documents\000GG\IMAGES\BATCHES\MAR_12_RRG
2 MD C:\Users\Marty.Reisinger\Documents\000GG\IMAGES\BATCHES\MAR_13_RRG
3 MD C:\Users\Marty.Reisinger\Documents\000GG\IMAGES\BATCHES\MAR_14_RRG
4 MD C:\Users\Marty.Reisinger\Documents\000GG\IMAGES\BATCHES\MAR_15_RRG
```

Folders Can Be Made Easily

Text: to use (MD means Make Directory; include a valid path)

MD C:\Users\Marty.Reisinger\Documents\000GG\IMAGES\BATCHES\MAR_12_RRG

References

- [Attachment Wizard Guide](#)
- [GG Project User Documentation page](#)