

SMTA

NPGS Changes
Coming Soon

November 29, 2023

Meeting starts at 2:30 Eastern

Today's Objectives

Be able to...

- gain basic understanding of imminent changes
- forum for discussion / questions / concerns

What's Similar?

Domestic requests for accessions acquired by NPGS with an SMTA

...require the requester to accept the SMTA

NPGS sites

What's Different?

International requests for *any* accession

...require the requester to accept the SMTA

All NPGS ***sites but not non-NPGS sites with PGR backed-up at NLGRP and/or data in GRIN-Global:***
(TGRC, DLEG, NTSL, TOB)




Accessions PI 500000 and PI 600000 were acquired without an SMTA;
PI670518 was acquired into NPGS with an SMTA

Selected item(s) below: [Remove from Cart](#)

Select	Accession	Name	Taxonomy	Genebank	Restrictions	Comment
<input type="checkbox"/>	PI 600000	Sunburst	<i>Helianthus</i>	27		 ✕ Remove
<input type="checkbox"/>	PI 500000	Purplestraw	<i>Triticum aestivum</i>	CGC		 ✕ Remove
<input type="checkbox"/>	PI 670518	ILC 62	<i>Cicer arietinum</i>	6	MTA-SMTA	 ✕ Remove

Domestic
request

Selected item(s) below: [Remove from Cart](#)

Select	Accession	Name	Taxonomy	Genebank	Restrictions	Comment
<input type="checkbox"/>	PI 600000	Sunburst	<i>Helianthus</i>	27	MTA-SMTA	 ✕ Remove
<input type="checkbox"/>	PI 500000	Purplestraw	<i>Triticum aestivum</i>	CGC	MTA-SMTA	 ✕ Remove
<input type="checkbox"/>	PI 670518	ILC 62	<i>Cicer arietinum</i>	6	MTA-SMTA	 ✕ Remove

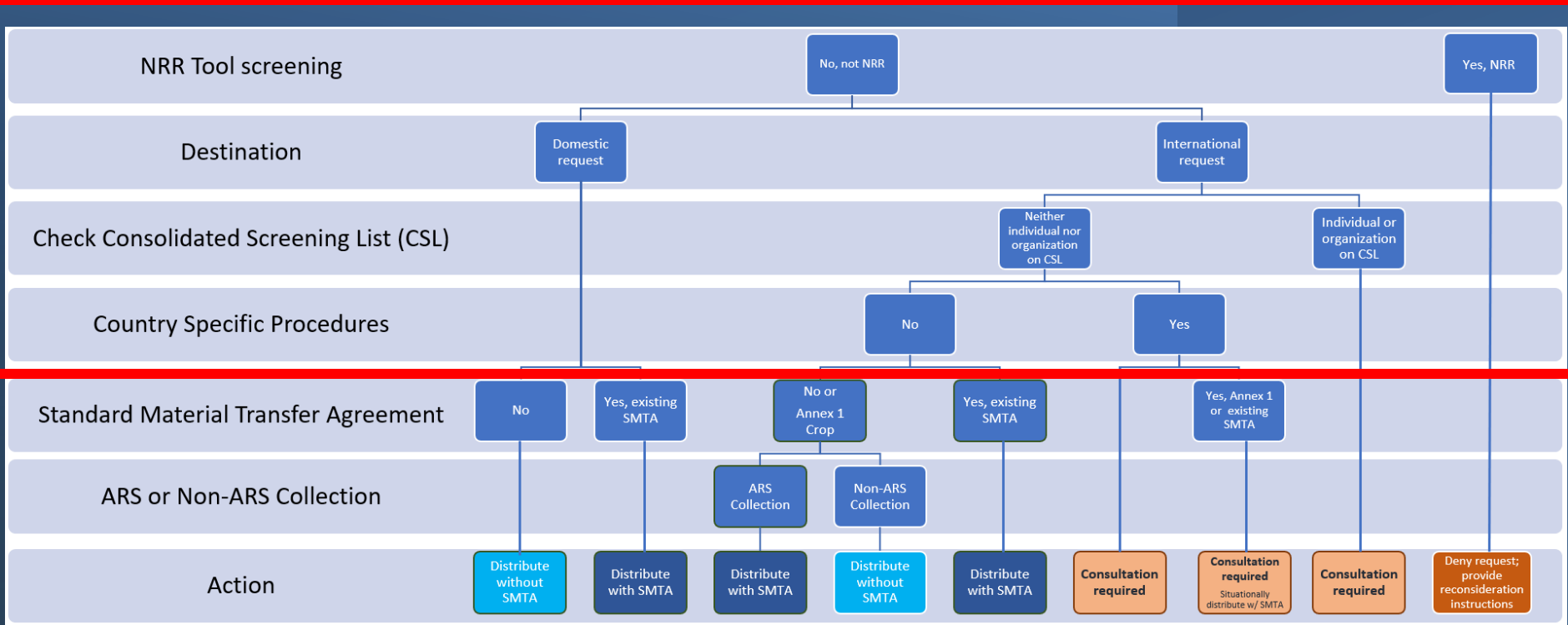
International
request (NPGS
sites)

What's Different?

More formal procedures for validating requests.
Primarily impacts the NRR Reviewers and the National Program Leader

review of:

- Countries & specific regions
- The Consolidated Screening List (CSL) - organizations and individuals



References

- <https://www.fao.org/plant-treaty>
for an introduction to the Multilateral System (MLS) and the Standard Material Transfer Agreement (SMTA). Note that the MLS and SMTA are extremely complicated concepts that can be interpreted and implemented in different ways by different national governments. Designated staff from ARS and other US government agencies should be consulted for advice when technical questions arise.
- NPGS SMTA Guide
to be determined, but most likely
https://www.grin-global.org/docs/SMTA_NPGS.pdf

