

Connecting to a GRIN-Global Database



Revision Date

September 30, 2022

TOC

Introduction	2
Default Server - localhost.....	2
Username and Password.....	3
National Plant Germplasm System (NPGS) Specifics	3
Other GRIN-Global Database Server Names	3
Connecting to a GG Server	4
NPGS Production Database	4
localhost	4
Training Server at NPGS	5
Public Website Settings.....	6
NPGS DEV Server	6

Introduction

When the Curator Tool (CT) is installed on a user's PC, it *does not point to a genebank's server (database) unless the [directions for installing the CT are completely followed](#)*.

This document explains how to connect genebank workers' Curator Tool on their PCs to a GRIN-Global database on a remote server. The document uses NPGS connections as examples. Other genebanks will have different connections settings. In any case, the genebank's GRIN-Global administrator will be able to provide the specific server information.

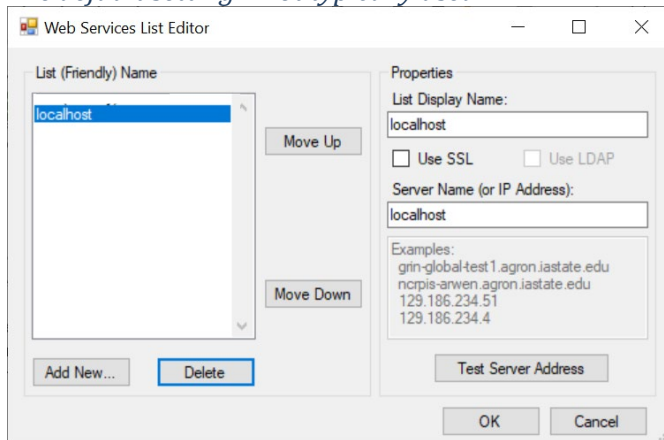
This document also includes a brief reference to connecting to the [GG Public Website](#).

Default Server - localhost

When the CT is initially installed, the CT points automatically to a "localhost" server. ***Rarely is this a valid server.*** Most genebank staff need to connect their PC to a remote database server.

(The localhost setting is only valid when the GG database is also installed on the user's PC, typically done by IT professionals doing testing.)

The default setting – not typically used:



Username and Password

Curator Tool users need a user account and password set up by the genebank's GG database administrator. The following settings illustrate how to connect to the NPGS* production server.

Obtain your **Username** (often your email address) and **Password** from your genebank's GRIN-Global administrator.

Username: _____

Password: _____

National Plant Germplasm System (NPGS) Specifics

Note: - Benjamin Haag is the NPGS GG administrator. (Benjamin.Haag@usda.gov) He will establish two accounts, one for production data "NPGSWEB" and another for practice "TRAINING."

These two accounts *are separate* accounts. Most likely these accounts will seem identical to the user. That is, the accounts may have the same usernames and passwords. Eventually though, the passwords may be reset at different times and one account's password may differ from the other account.

Accounts

Each NPGS user may ultimately need four user accounts:

Server & Program	Username	Password
NPGSWEB & Curator Tool		
TRAINING & Curator Tool		
NPGSWEB & Public Website		
TRAINING & Public Website		

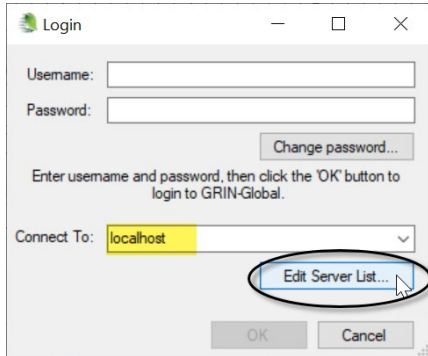
The database administrator (DBA) uses an Admin Tool to connect your CT account with the PW account (for each database).

Other GRIN-Global Database Server Names

GRIN-Global administrators determine the GG server information for their respective genebank. Users who will be using the Curator Tool need to know the genebank's proper server information and should contact their administrator.

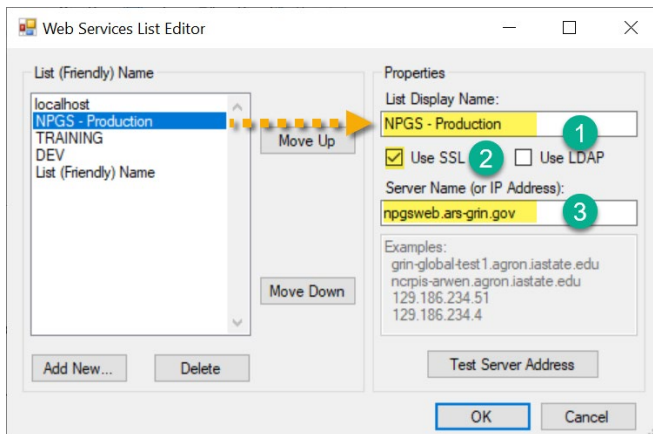
Connecting to a GG Server

Click the **Edit Server List** button to edit or add GG servers to a list:



NPGS Production Database

As an example:



- (1) In the **List Display Name** box, input a name as your friendly name for the database (can be any text).
- (2) Some organizations, such as NPGS, will be using SSL.
- (3) (If not NPGS) your genebank's GRIN-Global administrator should provide the server information. It will either be a valid domain server name, or a string of numbers (an explicit IP address). For example, at NPGS, the production server is: **npgsweb.ars-grin.gov**

In the example image above, five server names are listed in the left box. When multiple names are listed, use the **Move Up** and **Move Down** buttons to order the server names as desired. Typically, the server you will primarily be using will be positioned at the top of the list.

localhost

Most people do not need the localhost connection. That connection can be deleted by selecting **localhost** and then clicking the **Delete** button. (localhost is a full GG database on the user's PC. Most genebanks use a remote server and users must connect to that database.)

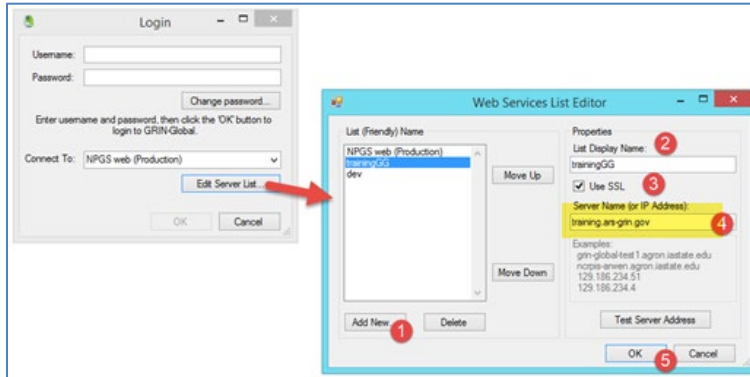
Training Server at NPGS

On NPGS PCs with a newly installed CT, the server information for all databases needs to be initially entered.* NPGS has a production server (NPGSWEB), and a training server, "TRAINING."

*Here's how to connect the Curator Tool to the **NPGS TRAINING** database:*

At the **Login** window, click the **Edit Server List** button

To include or delete servers from the list, click the **Edit Server List** button:



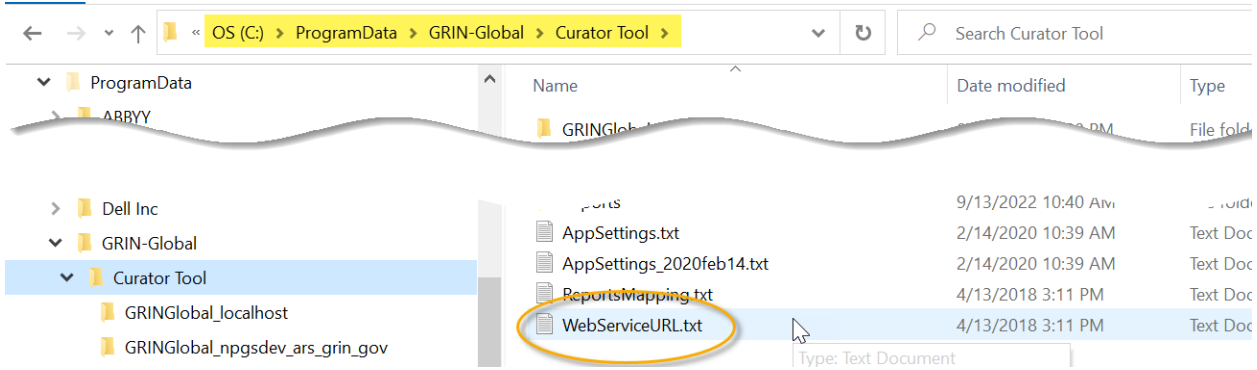
- (1) Click **Add New**
- (2) In the **List Display Name** box, input a name (can be any text) for the database.
- (3) Some organizations, such as NPGS, will be using SSL.
- (4) In this example: **training.ars-grin.gov**



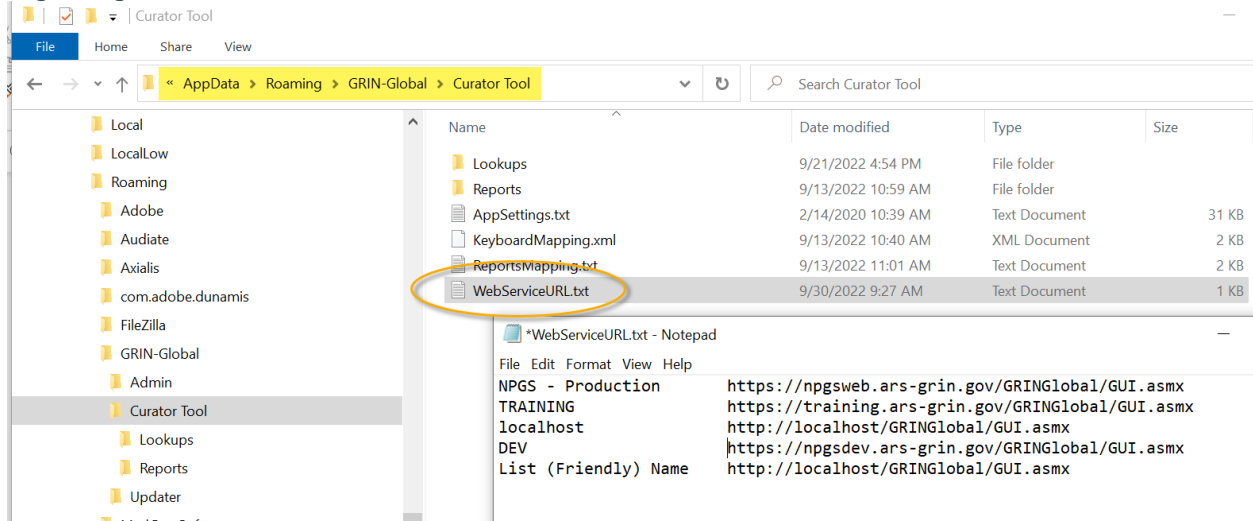
NPGS is using Secure Sockets Layer (SSL) security. The **Use SSL** checkbox must be selected. The actual NPGS server address is shown here for the **training** database. Each genebank will determine its own Server Name / IP Address. Contact your organization's GG administrator if you do not know what server name to use.

* CT Installers / Administrators: The text file `WebServiceURL.txt` is stored on a user PC when the CT is installed. Prior to CT Release 1.22.8.24, the folder was located under the `ProgramData` folder, but beginning with 1.22.8.24, the file is installed under the user's `Roaming` folder (next two images). When setting up the Curator Tool on multiple PCs, you can copy this text file into the proper folder rather than manually connect with the steps listed above.

Prior to CT version 1.22.8.24



Beginning with CT version 1.22.8.24



Public Website Settings

Each database, NPGSWEB and TRAINING, has its respective Public Website (PW). Users themselves will create (“Register”) their two PW user accounts. After they have registered, let Benjamin know and he can associate the PW to the CT account so that certain “internal” privileges are possible for the staff person.

The URL’s are:

- NPGSWEB: <https://npgsweb.ars-grin.gov/gringlobal/search.aspx?>
- TRAINING: <https://training.ars-grin.gov/gringlobal/search.aspx?>

NPGS DEV Server

Sometimes people are asked to test something on the DEV server (“DEV” for development). The URL for the DEV public website is: <https://npgsdev.ars-grin.gov/gringlobal/search>

