

# Frequently Asked Questions (Curator Tool)

---



**Revision Date:**  
August 16, 2022

This document is printed in Word and converted to an Adobe Acrobat .pdf format. In Word, press the Ctrl key and click the topic in the Table of Contents to jump to that topic; if you are viewing this in Acrobat, click the link.

GRIN-Global documents online are at the GG project site: <https://www.grin-global.org/> especially under **Documentation**.

## Table of Contents

<b>Getting Started</b>	<b>4</b>
Are there any self-paced tutorials or other materials to help me learn the Curator Tool? .....	4
What is my Basic Workflow?.....	4
Logging in, I received a weird error message “...Document Moved...” Why? .....	4
When I start up the Curator Tool, a disclaimer (“banner”) displays stating that “You are accessing a U.S. Government information system...” which I know is not valid. Can the CT be configured differently? .....	5
<b>Accessions</b>	<b>6</b>
How can I change the Maintenance Site for an accession? .....	6
How is ownership determined for the Inventory records? .....	6
Can Accessions that are stored in-vitro be managed by GRIN-Global? .....	6
I received an error message when I attempted to delete my Accession.....	7
What is Needed to Create Accession Data in GRIN-Global? .....	7
How are Passport Descriptors handled in the Curator Tool? .....	8
<b>Inventory</b>	<b>9</b>

I created an Inventory record but now I cannot edit it. Why? and what do I need to do to edit the record? .....	9
What logic is used to determine if an inventory is available? .....	9
Why are two fields - "Is Available?" and "Is Default Inventory?" used to trigger availability? .....	9
<b>Summary of Flags That Determine if an Inventory is to be Displayed (or not) on the PW</b>	<b>11</b>
A collection may have "black box" records which are not to be viewed by anyone. Is there a mechanism for hiding records that should always be hidden? .....	11
What does the field "Is Web Visible?" in the accession_inv_group table control?.....	11
What affect does selecting the Is Web Visible? field in the accession_source or accession_inv_attach records have? .....	12
<b>Orders</b>	<b>13</b>
What happens to an incoming order that requests germplasm from more than one site? .....	13
How are the Inventory Items determined for an Order? .....	13
If we cancel a web order, are we expected to follow up with the customer via email to let them know that the order was cancelled, or will the system automatically send an email letting them know that their order was not accepted?.....	14
(Order question) In GRIN classic, I could add items for which I did not have any inventory or accession records. I seem to be unable to do that in GG.....	14
<b>Cooperators</b>	<b>15</b>
Who Owns an Incoming Cooperator on a Web Order? .....	15
<b>Ownership &amp; Permissions (Security)</b>	<b>16</b>
What is the "Include Child tables" option supposed to do?.....	16
I created an Inventory record but now I cannot edit it. Why? and what do I need to do to edit the record? .....	16
How does GRIN-Global handle security so that data is not accidentally or intentionally altered or deleted? .....	17
I received an error message when attempting to delete my Accession.....	17
<b>Search</b>	<b>18</b>
In the Search Tool, is each new search against the entire database, or just the found records from the previous search? .....	18
If a person configures a search in the Search Tool, is it possible to store the text search somewhere within the GG interface for future use?.....	18
When I searched with the List of Items button selected, and I supplied only a single column of accession_prefixes, the search didn't find any records, yet I know there are some. Is there an alternative? .....	18
In the Search Tool, what is the best format to search for a particular date?.....	19
<b>Reports</b>	<b>20</b>
I do not see any reports/packing lists listed in the Order Wizard Printing dropdown. What do I need to do to see them? .....	20

Why can't I see reports in the Order Wizard Printing drop-down?.....	20
When I install the Curator Tool, Crystal Reports (CR) is also installed. Does that mean I can use CR Crystal Reports to design my own reports? .....	21
<b>Database (/ Schema) Questions</b>	<b>22</b>
What text is stored in the accession_source note field? .....	22
Why doesn't the accession voucher table have a Voucher Type field?.....	22
Where in GRIN-Global are studies or environments defined? .....	23
<b>Miscellaneous Curator Tool</b>	<b>24</b>
How can you restore the hidden rows when they are all hidden?.....	24
Any way to internally increase the Curator Tool's font size? .....	24
In the Curator Tool, I sometimes cannot select a row – only a field. Why? .....	25
Can a Curator Tool dataview be modified to include additional fields?.....	25
I am still not clear about setting up Lists ("Folders"). Can I see how others use lists?.....	25
There are two folder types – I am not sure what the differences are between the two types or when to use them. ....	26
Is there a method for deleting multiple records?.....	26
What size should my Query Paging Size be?.....	27
Is there a quick way to remove all the dataview tabs from the Curator Tool? .....	27
Where does the information for the Created by and Modified by fields come from? .....	27
I received an error message when attempting to delete my Accession. Why could I not delete the accession record?.....	28
When I start up the Curator Tool, why do I receive an error message and get frozen at that point? ...	29
What does an "error 40 ...could not open a connection to SQL Server" message mean when trying to start the CT? .....	29
<b>Taxonomy</b>	<b>31</b>
What does the term "is_accepted_name" indicate?.....	31
<b>Crops, Traits (Descriptors), and Codes</b>	<b>33</b>
How do you add crop descriptors? .....	33
How can I determine what are all the possible coded values for a trait? .....	34
If an accession has multiple inventories, will we need to copy these "passport-like" traits repeated for each inventory?.....	35
If I have two or more crops in my GRIN-Global database, how can we "block" out a crop to Curator Tool users who will not need to be reviewing that crops' information? For example, genebank wheat users do not need to see the maize information. Is this possible? .....	35
<b>Images</b>	<b>36</b>
How do you load images into GRIN-Global?.....	36
<b>Installation Questions</b>	<b>37</b>
What do I need to install in order to access GRIN-Global?.....	37

# Getting Started

## Question

**Are there any self-paced tutorials or other materials to help me learn the Curator Tool?**

## Answer

Yes. Start by visiting the GRIN-Global training page: <http://grin-global.org/exercises.htm>

Also, review the videos that are listed on the training videos page: <http://grin-global.org/videos.htm>.

[Return to TOC](#)

## Question

**What is my Basic Workflow?**

## Answer

Because GRIN-Global is so flexible, the answer to this question is “it depends.” If you are a curator, your initial work may involve either entering new accession data into the GRIN-Global Curator Tool or copying existing data from a spreadsheet or some other database source.

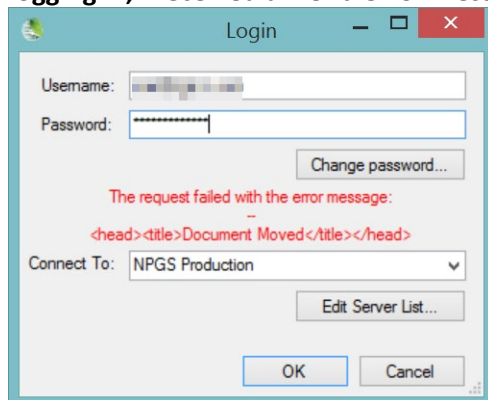
If you process germplasm orders for your site, then you will regularly be reviewing incoming orders, pending orders being held for some reason or another, and orders shipped. Not everybody uses GG exactly alike.

GG is not particular workflow oriented, but users can record their actions to track their progress when working with accessions, inventory items, and distribution requests.

[Return to TOC](#)

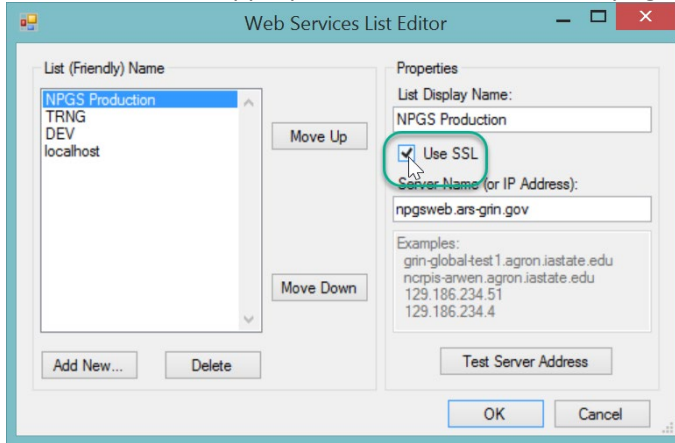
## Question

**Logging in, I received a weird error message “...Document Moved...” Why?**



**Answer**

This message typically displays when the SSL checkbox has been unchecked. Click on the Edit Server List button, check the appropriate SSL checkbox, and try again.



Note: the Server Name shown is the USDA NPGS's address; this address is different for each GRIN-Global installation. Contact your organization's GG database administrator (DBA) for your GG specifics.

[Return to TOC](#)

**Question**

**When I start up the Curator Tool, a disclaimer ("banner") displays stating that "You are accessing a U.S. Government information system..." which I know is not valid. Can the CT be configured differently?**

**Answer**

Yes, by your organization's GRIN-Global administrator.

[DBA: The app\_setting file contains an entry "GrinGlobalClient\_loginBanner." The value for this record can be edited to whatever appropriate message your organization desires. The GG administrator must do this; this is not an end-user setting.]

[Return to TOC](#)

# Accessions

Refer to the online Accessions Guide for complete details about GRIN-Global accession records and passport data: [https://www.grin-global.org/docs/gg\\_accessions\\_and\\_passport\\_data.docx](https://www.grin-global.org/docs/gg_accessions_and_passport_data.docx).

## Question

**How can I change the Maintenance Site for an accession?**

## Answer

First, understand how the **Maintenance Site** is determined. The site of the record owner is the Maintenance Site. Change the owner, the Maintenance Site will change to match the owner's site.

To change ownership (if you are the owner), select the record and then select **Change Owner...** from the menu. (You cannot change the ownership if you are not the record owner – you would need to request the owner to change the ownership.)

Ownership (and permissions) are explained in the document:  
[https://www.grin-global.org/docs/gg\\_security.docx](https://www.grin-global.org/docs/gg_security.docx)

[Return to TOC](#)

## Question

**How is ownership determined for the Inventory records?**

## Answer

When an inventory record is created, one of the required fields is the **Inventory Maintenance Policy (IMP)**. Whoever owns the Maintenance Policy used in creating the Inventory record becomes the owner of the Inventory record. Therefore, the *creator* of the inventory record is not necessarily the *owner* of the Inventory record. This last sentence has important ramifications – even though you may have created an inventory record, you may not be able to edit the record until you receive the appropriate permission!

[Return to TOC](#)

## Question

**Can Accessions that are stored in-vitro be managed by GRIN-Global?**

## Answer

Yes. Several approaches can be used for keeping track of the inventory.

One consideration is that an *in vitro* (IV) inventory does not have a finite inventory. As long as you keep it alive, you could get an infinite number of plantlets from it. You could give the inventory record an **onhand** value of 1,000 to keep track of how many times it was ordered. Each time you can deduct from the onhand value as samples go out. At typical IV order might have 3 *in vitro* plantlets.

[Return to TOC](#)

### Question

**I received an error message when I attempted to delete my Accession.**

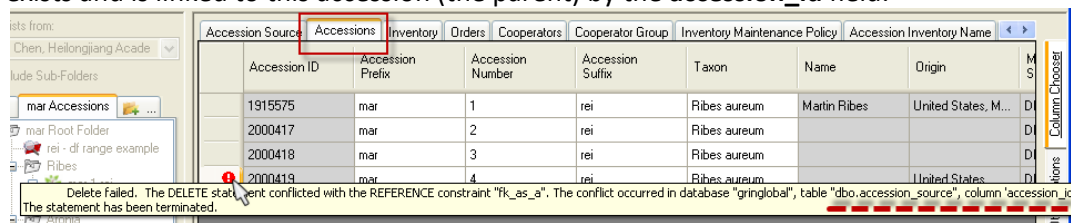
Why could I not delete the accession record?

### Answer

There are two main reasons why any record cannot be deleted:

- the record has related child records
- you do not have the rights to do so: either you do not own the record or do not have permission to delete the record

In the following example, the error message is indicating that an accession source record (the child) exists and is linked to this accession (the parent) by the **accession\_id** field:



Accession ID	Accession Prefix	Accession Number	Accession Suffix	Taxon	Name	Origin	M S
1915575	mar	1	rei	Ribes aureum	Martin Ribes	United States, M...	DI
2000417	mar	2	rei	Ribes aureum			DI
2000418	mar	3	rei	Ribes aureum			DI
2000419	mar	4	rei	Ribes aureum		United States	DI

The accession had a child. If you want to delete the parent, you must delete the child first. Note that this had nothing to do with ownership or permissions – it simply is a basic tenet for a database – the database doesn't allow orphans!

[Return to TOC](#)

### Question

**What is Needed to Create Accession Data in GRIN-Global?**

### Answer

You have three alternative approaches:

- (1) Drag and drop data from a spreadsheet.
- (2) Input the data, one record at a time via either the Accession dataview or the Accession Wizard. However, we recommend using the wizard since you can add data into the many related supplementary accession tables at the same time.
- (3) Use the Admin Tool's Import Wizard to bulk load data. (Refer to the "[Data Preparation Cookbook](#)" for a complete overview and details. However, in many organizations, access to the Admin Tool is restricted to administrators. This tool is not recommended to use on an ongoing basis. Why not? The Import Wizard bypasses some of the safeguards built into the CT. Also, the Import Wizard has not been updated to match the latest schema for all of its wizard dataviews.

[Return to TOC](#)

## Question

### How are Passport Descriptors handled in the Curator Tool?

#### Answer

In GG many inter-related dataviews handle the passport data. In general, passport data is stored in the tables accessed by the Accession dataviews. For a specific accession, the simplest way to display or edit its passport data is to select the accession record in the data grid and then start the accession wizard. Using the wizard, you can easily review the related accession dataviews where most of the passport data is stored.

There is a lengthy document available online that explains where the passport data is stored in GG: see [Multi-Crop Passport Descriptors](#).

[Return to TOC](#)

---



# Inventory

[Refer to the online [Inventory Guide](#) for complete details about GRIN-Global inventory.]

## Question

**I created an Inventory record but now I cannot edit it. Why? and what do I need to do to edit the record?**

## Answer

The owner of an Inventory record is determined by which **Inventory Maintenance Policy** record was used when the Inventory record was created. (The Inventory Maintenance Policy field is a required field for the Inventory record.) So even though you may have created the Inventory record, you are not necessarily the owner. *The owner of the Inventory Maintenance Policy record is also the owner all inventory records that are created using that policy.*

You can contact the owner and have him transfer ownership to you or ask him to give you permission to edit the record.

[Return to TOC](#)

## Question

**What logic is used to determine if an inventory is available?**

## Answer

The Inventory record representing the sample lot which is to be distributed should have the two Y(es)/N(o) fields “**Is Available?**” and “**Is Default Inventory?**” set to **Y**. Inventory availability is explained in detail in the “*What Determines Accession Availability*” section in the [Inventory Guide](#).

(In Edit mode in the Curator Tool, selecting (checking) the box inputs a “Y” value, whereas an unchecked box contains an “N.”)

Note: An Accession record has a **Status** field. When that field is set to “Inactive,” then it should be assumed that the accession cannot be ordered.

[Return to TOC](#)

## Question

**Why are two fields - “Is Available?” and “Is Default Inventory?” used to trigger availability?**

## Answer

“**Is Available**” indicates the sample is viable and in sufficient quantity to distribute. The “**Is Default Inventory?**” **distributable** field is used to indicate that this inventory is to be distributed first whenever

an accession has multiple inventory samples available for distribution. Curators should set both columns to “Y” for the sample to distribute.

Note: In later releases of GG, it is possible to have more than one inventory set to “Y” for the **Is Default Inventory?” (distributable)** field

[Return to TOC](#)

---

## Summary of Flags That Determine if an Inventory is to be Displayed (or not) on the PW

### Question

A collection may have “black box” records which are not to be viewed by anyone. Is there a mechanism for hiding records that should always be hidden?

### Answer

Use the **is\_web\_visible** column in the accession table to hide this accession from public websites users.

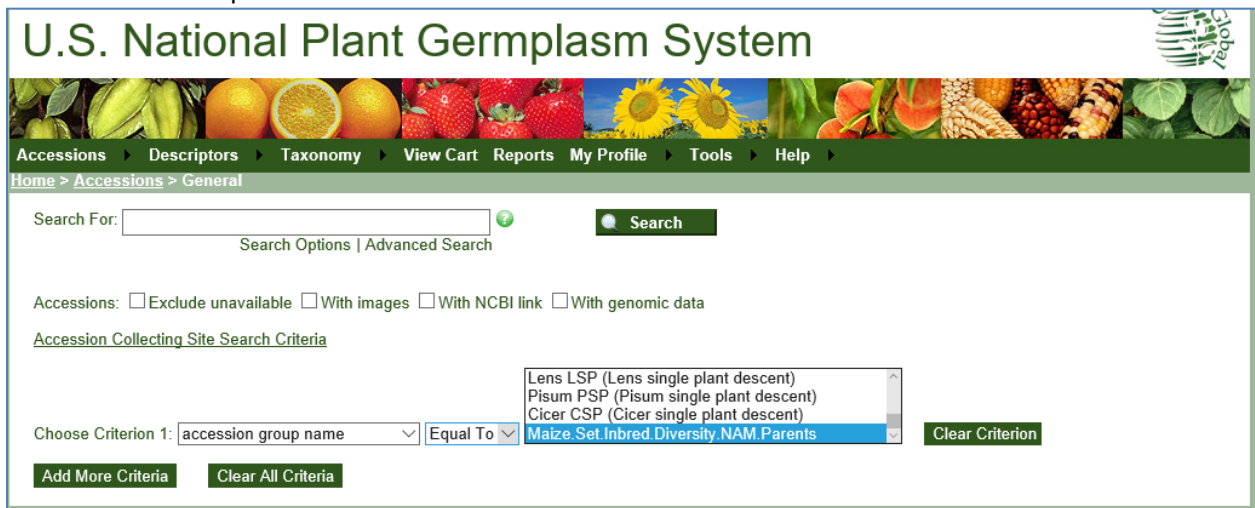
[Return to TOC](#)

### Question

What does the field “Is Web Visible?” in the accession\_inv\_group table control?

### Answer

A curator can set up a group of accessions for whatever reason, and then make that group name visible or not. When the flag is set to visible, a Public Website user will see the name displayed under the Advanced Search option:



Get Cooperator	Get Accession IPR	Get Geography	Citation	Code Value	Get Name Group	Accession Inventory Group	Accession
	Accession Inventory Group ID	Group Name			Is Web Visible?	Note	
	-1				<input type="checkbox"/>		

Complete directions are in the [Grouping](#) document.

[Return to TOC](#)

## Question

**What affect does selecting the Is Web Visible? field in the accession\_source or accession\_inv\_attach records have?**

## Answer

Checking the **Is Web Visible?** field creates a value of “Y” for the field.

In the **accession\_source** record, selecting the field indicates that the source data (latitude, longitude, etc.) is to display on the Public Website accession detail page. Alternatively setting it to **N** hides sensitive locality details from the public.

The **accession\_inv\_attach** table has a similar field – when the **Is web visible? field** is selected, the field will contain a “Y” that denotes the image will display on the Public Website page. If not selected, the attachment will not display.

[Return to TOC](#)

---



- 3) Find an inventory from your site
- 4) Find an inventory marked as distributable and available from some other site
- 5) Find an inventory marked as distributable from some other site
- 6) Find any inventory record for the accession

[Return to TOC](#)

### Question

**If we cancel a web order, are we expected to follow up with the customer via email to let them know that the order was cancelled, or will the system automatically send an email letting them know that their order was not accepted?**

### Answer

Currently the Order Wizard does not automatically send a cancel notice when the web order is cancelled. So ideally you will send the user an email letting them know that their order was not accepted.

[Return to TOC](#)

### Question

**(Order question) In GRIN classic, I could add items for which I did not have any inventory or accession records. I seem to be unable to do that in GG.**

**I tried adding the accession record, but GG does not accept the format I had been using for introductions that have not yet been assigned a permanent H number (i.e. N13-3). In GG, does each item need an inventory record?**

### Answer

Yes, in GG all items must link to an inventory. If you have an Accession ID and no physical inventory records, you can link the order to the default inventory record that is system generated for each accession (the "\*\*\*" inventory record). If you do not have an accession ID either, then you will need to create a "fake" accession. You could have one accession record expressly made for that purpose – as a "holding" accession whenever you need to point to when a real accession ID doesn't exist yet.

[Return to TOC](#)

---

# Cooperators

## Cooperator Ownership

### Question

#### **Who Owns an Incoming Cooperator on a Web Order?**

### Answer

When an incoming web order requesting germplasm from multiple sites is processed, whoever initially processes the web order and creates a new cooperator record is the de facto owner of the cooperator record. If another site needs to adjust the cooperator record, the original processor should either transfer ownership or adjust the permission levels on the record.

Note: a GG database administrator can setup for an organization the capability for specific users to edit any cooperator record. See [https://rrginc.com/documents/gg\\_AT\\_pres05.pdf](https://rrginc.com/documents/gg_AT_pres05.pdf) slides 45 – 47.

[Return to TOC](#)

---

## Ownership & Permissions (Security)

### Question

What is the “Include Child tables” option supposed to do?

The screenshot shows a configuration window for a policy. It has three main sections: 'Scope', 'Row Restrictions', and 'Use'. The 'Scope' section is expanded to show a list of tables: 'accession', '- accession\_action', '- accession\_ipr', '- accession\_pedigree', '- accession\_quarantine', and '- accession\_source'. The 'Row Restrictions' section has 'All My Rows' selected. The 'Include Child Tables' checkbox is checked and circled in orange.

### Answer

The "Include Child tables" option is supposed to do what you think it should do. It extends the permissions settings to the child tables. In the example here, the accession table and the five children tables that are listed will all receive the same permission settings.

Also, note in the example above that the “All My Rows” option was selected. That indicate to the CT that in this case all of the accessions owned by the user will be affected by the same permission policy that is being set.

[Return to TOC](#)

### Question

**I created an Inventory record but now I cannot edit it. Why? and what do I need to do to edit the record?**

### Answer

The owner of an Inventory record is determined by which Inventory Maintenance Policy record was used when the Inventory record was created. (The Inventory Maintenance Policy field is a required field for the Inventory record.) So even though you may have created the Inventory record, you are not necessarily the owner. *The owner of the Inventory Maintenance Policy record is also the owner of any inventory records that are created using that policy.*

You can contact the owner and have him transfer ownership to you or ask him to give you permission to edit the record.

[Return to TOC](#)



## Question

How does GRIN-Global handle security so that data is not accidentally or intentionally altered or deleted?

## Answer

GRIN-Global has built-in security capabilities which the GRIN-Global administrator can enable or disable. Furthermore, the administrator can designate ownership and permission rules that determine who can read, update, and delete records. There is detailed information for users in the [Security: Ownership and Permissions Guide](#). GG Administrators should read that as well as the additional security information explained in the [GRIN-Global Admin Guide](#).

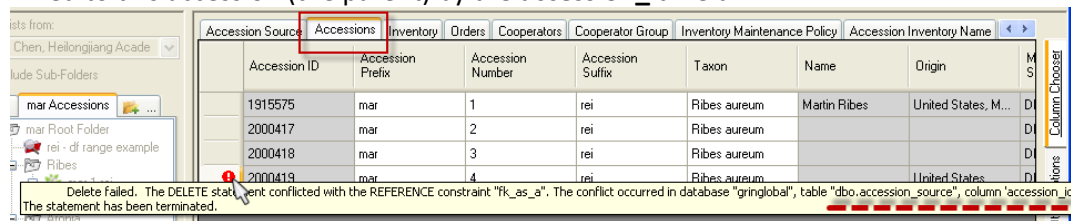
[Return to TOC](#)

## Question

I received an error message when attempting to delete my Accession.

Why could I not delete the accession record?

In this example, the error message is indicating that an accession source record (the child) exists and is linked to this accession (the parent) by the **accession\_id** field:



Accession ID	Accession Prefix	Accession Number	Accession Suffix	Taxon	Name	Origin	M S
1915575	mar	1	rei	Ribes aureum	Martin Ribes	United States, M...	DI
2000417	mar	2	rei	Ribes aureum			DI
2000418	mar	3	rei	Ribes aureum			DI
2000419	mar	4	rei	Ribes aureum		United States	DI

Delete failed. The DELETE statement conflicted with the REFERENCE constraint "fk\_as\_a". The conflict occurred in database "gringlobal", table "dbo.accession\_source", column "accession\_id". The statement has been terminated.

## Answer

The accession had a child. If you want to delete the parent, you must delete the child first. Note that this had nothing to do with ownership or permissions – it simply is a basic tenet for a database – the database doesn't allow orphans!

[Return to TOC](#)

# Search

## New Search

### Question

**In the Search Tool, is each new search against the entire database, or just the found records from the previous search?**

### Answer

Each time you click the “**Search Now!**” button, a new search is invoked. That is, the last query results are discarded and the entire query criteria (what you see in the textbox) is resubmitted to the SE as a new search.

[Return to TOC](#)

### Question

**If a person configures a search in the Search Tool, is it possible to store the text search somewhere within the GG interface for future use?**

### Answer

Yes! Save the query in the *Curator Tool* as a dynamic folder. In creating the dynamic folder, you drag or copy the code text generated by the Search Tool and add that to a dynamic folder’s Search Criteria in the Curator Tool. For more details, refer to the [Dynamic Folders Guide](#).

Another option for saving the queries is to save the query text in a handy Word or any text document.

[Return to TOC](#)

### Question

**When I searched with the List of Items button selected, and I supplied only a single column of accession\_prefixes, the search didn’t find any records, yet I know there are some. Is there an alternative?**

### Answer

As an alternative, select the “**Any words**” button. The search will find the records since the accession\_prefix is one of the fields that is searched.

[Return to TOC](#)

## Question

**In the Search Tool, what is the best format to search for a particular date?**

## Answer

The format depends if you are using the mathematical operators = < > or if you are using **LIKE**. The following two clauses both returned 29 records (in a training database)

```
@order_request.ordered_date = '3/3/1993'
```

```
@order_request.ordered_date LIKE '1993-03-03%'
```

The second style accepts the % as a wildcard but not the \* . I prefer using the first format when setting up a "between" situation >= dataX and <= dateY such as:

```
(@order_request.ordered_date > '2012-12-31' AND @order_request.ordered_date <= '2014' )
```

“BETWEEN” is also a valid operator.

...returns 2013 records.

In the following example, January 2015 records are returned:

```
( @order_request.ordered_date > '31-Dec-2014' AND @order_request.ordered_date <= '31-Jan-2015' )
```

The following are valid searches:

```
@accession.created_date like '2015%'
```

```
@accession.created_date like '2015-09%' [4-digit year and 2 digit month]
```

```
@accession.created_date like '2015-09-05%' [4-digit year; 2 digit month and 2-digit day]
```

```
@accession.created_date like '2015-%-05%'
```

[Return to TOC](#)

---

# Reports

## Question

**I do not see any reports/packing lists listed in the Order Wizard Printing dropdown. What do I need to do to see them?**

## Answer

Refer to the [Reports Guide](#) for a full explanation. In short, most likely you need to edit a .txt file on your PC. The complete pathname/filename is:

C:\Users\*yourusername*\AppData\Roaming\GRIN-Global\Curator Tool\AppSettings.txt

A line similar to the following must be included in the text file:  
(if there is already a line there with a leading "#" - remove the # symbol (which comments the line) and you should be set)

OrderWizardCrystalReports = Order-Packing by Accession.rpt; Order-Packing by Inventory with Origin.rpt; Order-Packing by Inventory.rpt; Order-Packing General.rpt; Order-Packing Inventory by Accession.rpt; Order-Packing Picking List by Inventory.rpt; Order-Packing Picking List by Plant.rpt; Order-Packing NSGC.rpt; 3x3\_Packet\_Label.rpt

After you edit and save the .txt file, you need to close/restart the Curator Tool.

[Return to TOC](#)

## Question

**Why can't I see reports in the Order Wizard Printing drop-down?**

## Answer

One possible reason is that **ReportsMapping.txt** file on your PC needs to be edited with a line change. This file on the PC associates CT reports with dataview file(s). If you see some reports in the CT, but when in the Order Wizard do not see any reports listed in the Printing dropdown, add the following two lines to the **ReportsMapping.txt** file:

OrderWizardCrystalReports = Order-Packing by Accession.rpt; Order-Packing by Inventory with Origin.rpt; Order-Packing by Inventory.rpt; Order-Packing General.rpt; Order-Packing Inventory by Accession.rpt; Order-Packing Picking List by Inventory.rpt; Order-Packing Picking List by Plant.rpt; Order-Packing NSGC.rpt; 3x3\_Packet\_Label.rpt

The fix may be as simple as removing the # in front of existing code. The # is a symbol which comments the rest of the text behind it.

#Order Wizard Crystal Reports...

The **ReportsMapping.txt** file is stored at:

**C:\Users\*yourname*\AppData\Roaming\GRIN-Global\Curator Tool**

[Return to TOC](#)

### Question

**When I install the Curator Tool, Crystal Reports (CR) is also installed. Does that mean I can use CR Crystal Reports to design my own reports?**

### Answer

No. The CR version bundled with the Curator Tool is a *viewer* version, similar to Adobe Acrobat Reader. In Reader, you can only display a PDF, but you cannot create a new one. The same is true with Crystal Reports in the CT – CR is there to view the reports.

[Return to TOC](#)

---

## Database (/ Schema) Questions

(GRIN is the USDA legacy system that precedes GRIN-Global. Questions comparing the two systems are often raised by GRIN users.)

### Question

**What text is stored in the accession\_source note field?**

### Answer

The Accession\_Source Note field holds the text that was stored in GRIN's **src.cmt** field. (All of the GRIN **cmt** columns were changed in GRIN-Global to **Note**.)

[Return to TOC](#)

## Herbarium Specimens

### Question

**Why doesn't the accession voucher table have a Voucher Type field?**

### Answer

A herbarium specimen can be seed or a fruit. (A note for NPGS GRIN Users: The accession voucher table only holds herbarium samples now so there is no need for a voucher type. The other vouchers (images, links) are handled in the inventory attachment table.)

[Return to TOC](#)

## Question

### Where in GRIN-Global are studies or environments defined?

In GRIN Classic, traits are observed in studies or environments.

Example:

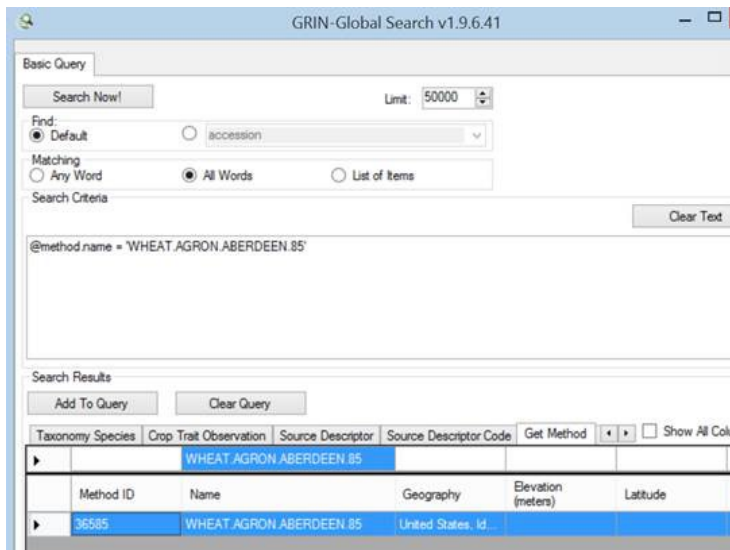
Crop: WHEAT

Trait: Growth Habit (HABIT)

Studies or environments: WHEAT.AGRON.ABERDEEN.85

## Answer

See Methods (Search Tool screen shown here):



GRIN-Global Search v1.9.6.41

Basic Query

Search Now! Limit: 50000

Find:  Default  accession

Matching:  Any Word  All Words  List of Items

Search Criteria: @method.name = WHEAT.AGRON.ABERDEEN.85

Search Results

Add To Query Clear Query

Taxonomy Species	Crop	Trait Observation	Source Descriptor	Source Descriptor Code	Get Method	Show All Columns
				WHEAT.AGRON.ABERDEEN.85		
Method ID	Name	Geography	Elevation (meters)	Latitude		
36585	WHEAT.AGRON.ABERDEEN.85	United States, Id...				

[Return to TOC](#)

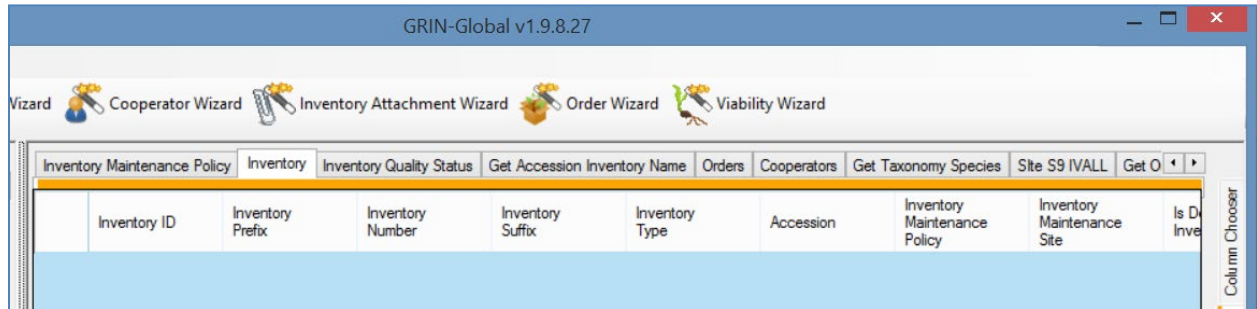
## Miscellaneous Curator Tool

### Question

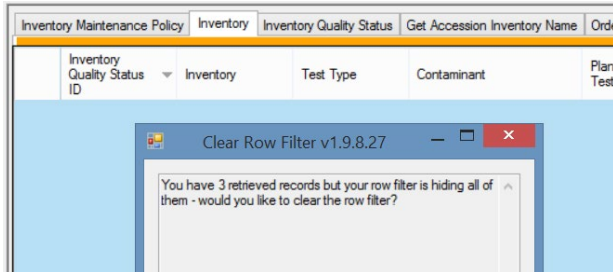
**How can you restore the hidden rows when they are all hidden?**

### Answer

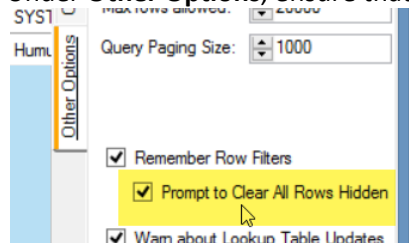
Beginning with CT version 1.9.8.27, a feature was added so that an orange stripe displays when all the rows are hidden:



If you switch to another dataview tab and then return to the dataview where the records are all hidden, a prompt displays, providing an opportunity to redisplay the records:



Under **Other Options**, ensure that the “**Prompt to Clear...**” checkbox is selected:



[Return to TOC](#)

### Question

**Any way to internally increase the Curator Tool’s font size?**

### Answer

No (unfortunately). To increase the font size, you might try changing the screen resolution (in Windows).



Note: The Windows utility "Magnifier" could help some. The Magnifier icon can be installed onto the Taskbar. When you need the Magnifier, you can use the Windows key with a "+" key. the icon. You can set it up so that the magnification increases by 25% and you can configure it to magnify only one area, or the entire screen.

[Return to TOC](#)

### Question

**In the Curator Tool, I sometimes cannot select a row – only a field. Why?**

#### Answer

The CT has a feature for copying the contents of a cell or a range of cell, similar to Excel. If you press the **Ctrl + ~** keys, you are in this "BLOCK" mode. Highlight a range of cells, then press **Ctrl+C** (the Copy command). Paster wherever – in a spreadsheet, email, Word doc, etc. If you ever unintentionally press the Alt key, press **Ctrl+C** to return the interface back to normal (not necessary to paste, but you must press the Ctrl+C).

[Return to TOC](#)

### Question

**Can a Curator Tool dataview be modified to include additional fields?**

#### Answer

Yes, but this is a task reserved for the GRIN-Global administrator. You should contact your administrator if you need to display additional data. It may be that there is already a dataview with a field for your data. If not, there are considerations that must be made in changing the GRIN-Global schema (the tables and fields).

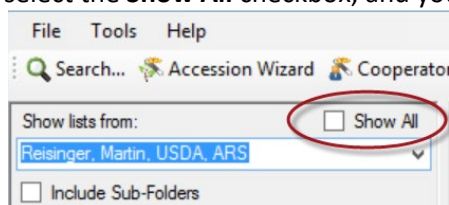
[Return to TOC](#)

### Question

**I am still not clear about setting up Lists ("Folders"). Can I see how others use lists?**

#### Answer

Yes. it's simple to do so. By default, you can share the lists from everyone in your site. With one click, select the **Show All** checkbox, and you can see the lists of anybody in the organization:



(By default, you are able to see lists of other users who have the same **Site Code** as you.)

[Return to TOC](#)

### Question

There are two folder types – I am not sure what the differences are between the two types or when to use them.

### Answer

The online guide [Dynamic Folders](#) explains the differences in detail. It includes the following table which summarizes some of the ways to use the lists:

Situation	Folder Type
Keep track of a list of constant records which you are working on from one day to the next	Static
List of orders processed on a specific day	Static
Maintain a list of all accessions for a specific Taxon	Dynamic
Review a subset of a site's inventory based on a certain criterion	Dynamic
Track orders based on specific criteria	Dynamic

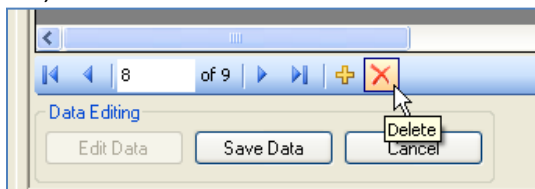
[Return to TOC](#)

### Question

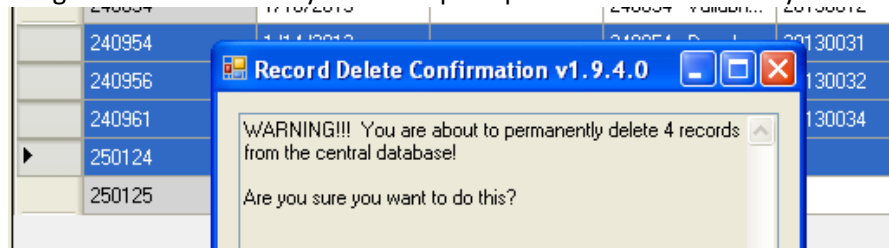
Is there a method for deleting multiple records?

### Answer

Yes, there are two distinct methods. You can delete multiple records with the red X button:



Alternatively, select the records to be deleted and then use your keyboard's Delete key. An advantage in using this method is that you will be prompted to confirm before you can delete the records:



[Return to TOC](#)

## Query Paging Size

### Question

**What size should my Query Paging Size be?**

### Answer

The CT's Query Paging Size setting controls the size of the data "chunk" that the CT is communicating with the server. Its unit is rows of data. 1000 is recommended; the CT asks the server to send records 1000 at a time. This size affects how fast the server responds and how much time it takes to transfer a chunk of data across the network. If it is too large, say 10,000, you risk the operation timing out before it is finished. When it is too small, say 10, more time is spent on the overhead of requesting and sending each block of data which slows the operation down.

If you begin to experience a "server timeout" error, that error is indicating that you are asking for so much data in one round trip that the server cannot deliver that size package in the time allotted. At that point you could reduce the paging size until you no longer receive that error.

Slow response time is often due to a bottle neck at the server and internet connection and may be a temporary condition.

[Return to TOC](#)

## Clear All Dataviews

### Question

**Is there a quick way to remove all the dataview tabs from the Curator Tool?**

### Answer

Yes. Select **Tools | User Settings**

Note that invoking this command also removes any other user settings, such as the colors for your alternate rows, the paging size, and other settings on the Other Options tab.

[Return to TOC](#)

## Modified by

### Question

**Where does the information for the Created by and Modified by fields come from?**

### Answer

The information in GRIN-Global comes from the user's demographic data inputted by the GG database administrator when the user was added to the system.

The following screen is an *administrator* screen. (Standard CT users will never see this screen.) The **Full Name** field was automatically generated by GRIN-Global when the administrator entered the user's First and Last names:

Cooperator Information

General Web Login Contact Info Geographic Notes

Current Cooperator is  Search...

Title:  First Name:  Last Name:

Marty  Reisinger

Full Name (for display):

Reisinger, Marty

Job:  Discipline:

Organization:  Organization Abbreviation:

Language:   Active

The following screen from the Curator Tool illustrates a new Accession record being created by that same user:

Accessions	Inventory	Orders	Cooperators	...			
Viewed Format	Note	Created Date	Created By	Modified Date	Modified By	Owned Date	Owned By
		3/2/2012 2:39 PM	Reisinger, Marty,			3/2/2012 2:39 PM	Reisinger, Marty,

(The source for the fields is the cooperator\_lookup.)

[Return to TOC](#)

### Question

**I received an error message when attempting to delete my Accession. Why could I not delete the accession record?**

### Answer

The database doesn't allow orphans! The accession had a child. If you want to delete the parent, you must delete the child first.

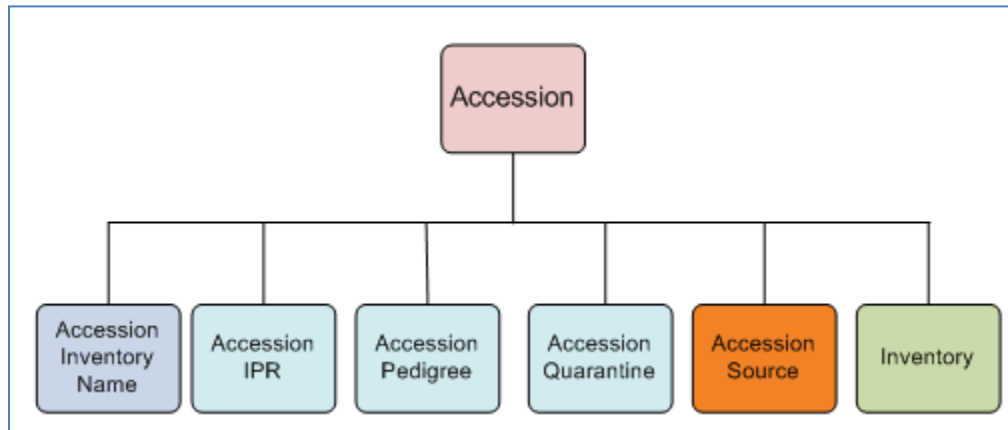
In this example, the error message is indicating that an accession source record (the child) exists and is linked to this accession (the parent) by the accession\_id field:

The screenshot shows a database interface with a table of Accession Source records. The table has columns: Accession ID, Accession Prefix, Accession Number, Accession Suffix, Taxon, Name, and Origin. The records are:

Accession ID	Accession Prefix	Accession Number	Accession Suffix	Taxon	Name	Origin
1915575	mar	1	rei	Ribes aureum	Martin Ribes	United States, M...
2000417	mar	2	rei	Ribes aureum		
2000418	mar	3	rei	Ribes aureum		
2000419	mar	4	rei	Ribes aureum		United States

An error message at the bottom states: "Delete failed. The DELETE statement conflicted with the REFERENCE constraint "fk\_as\_a". The conflict occurred in database "gringlobal", table "dbo.accession\_source", column 'accession\_id'. The statement has been terminated."

If a Source record was created for the Accession record, in order to delete the accession, you would need to delete the source record (and any other children records) first.



[Return to TOC](#)

### Question

**When I start up the Curator Tool, why do I receive an error message and get frozen at that point?**

### Answer

It could be that when the Curator Tool was installed, it was not completely set up properly. (The installation process is affected by the native security built into Windows and the Curator Tool.) Whoever installs the Curator Tool on your PC (someone with Windows administrator rights) should be sure to complete the step where they start up the Curator Tool and select “**Make database accessible to all users**” from the **Help** menu.

Follow the Curator Tool [installation guide](#) closely!

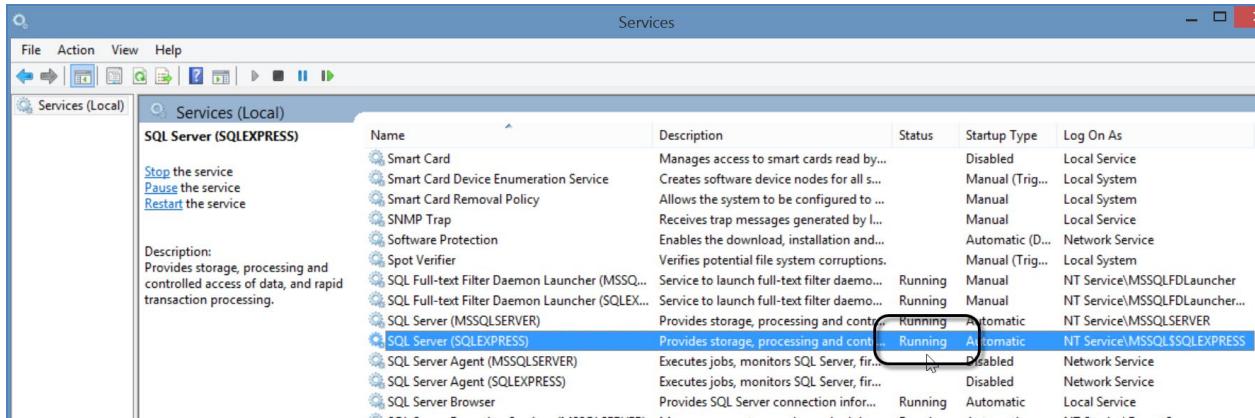
[Return to TOC](#)

### Question

**What does an “error 40 ...could not open a connection to SQL Server” message mean when trying to start the CT?**

### Answer

The CT requires a version of SQL Server to run. Review your “local services” to see if SQL Server is running properly (and if it isn’t, you should start it). To review, *right-click* the Windows Start button; Select: **RUN**; then type **services.msc**; Press Enter.



To start it, select the **SQL Server Express** name, and right click to display the menu; select **Restart**. (Shown here it was already running.)

[Return to TOC](#)

# Taxonomy

## Taxonomy Synonyms (is\_accepted\_name)

### Question

**What does the term “is\_accepted\_name” indicate?**

### Answer

The current\_taxonomy\_species\_id always points to the “accepted” name. In the database, when the accepted name is true, the taxonomy\_species\_id field equals the current\_taxonomy\_species\_id.

When they differ, the different current\_taxonomy\_species\_id is indicating that either a name change has occurred (a name used previously has since been replaced by a better name agreed upon by taxonomists) or that it represents a synonym.

[Return to TOC](#)

### Question

**Why does my exporting from web user fail? I get the message “Parsererror” when trying to export data from the web user interface.**

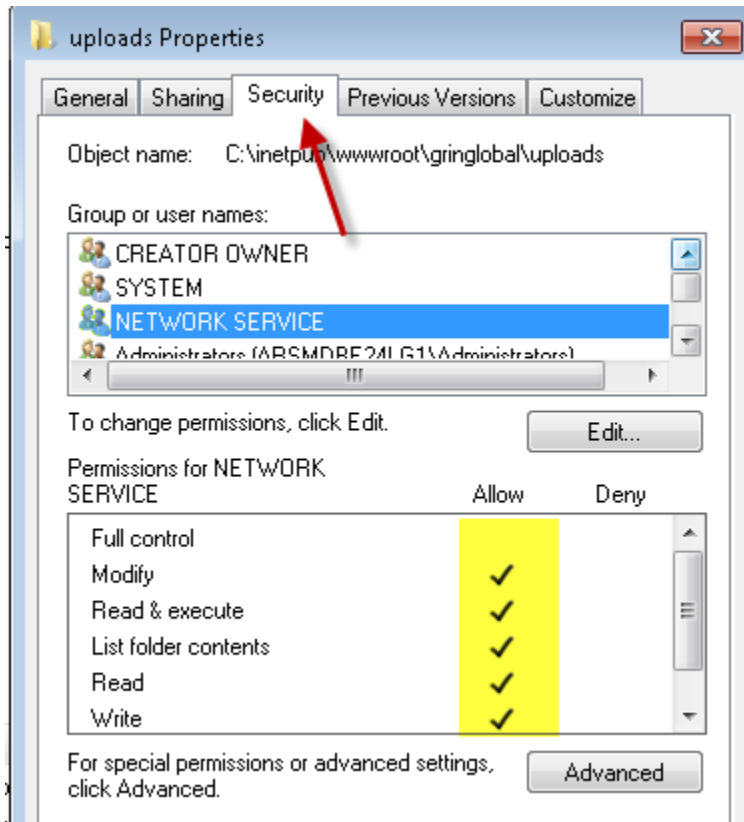
Files will not export -- instead an error box pops up: “The page at 142.165.167.238 says:

**Request failed: parsererror Undefined**

The error occurs on all pages where I try to export. The error appears immediately after I click the export button.

### Answer

Give your web server default **AppPool** (in many cases it is **NetworkService**) the read/write..permission to the **inetput\wwwroot\gringlobal\uploads** directory:



[Return to TOC](#)



# Crops, Traits (Descriptors), and Codes

## Traits: Editing Titles and Descriptions

### Question

#### How do you add crop descriptors?

I have been trying to add descriptors (`crop_trait`) and codes (`crop_trait_codes`) to one of my crops. I can add the `crop_trait`, but not the description, that area is grayed out. I can add the `crop_trait_code`, but not the code description, also grayed out.

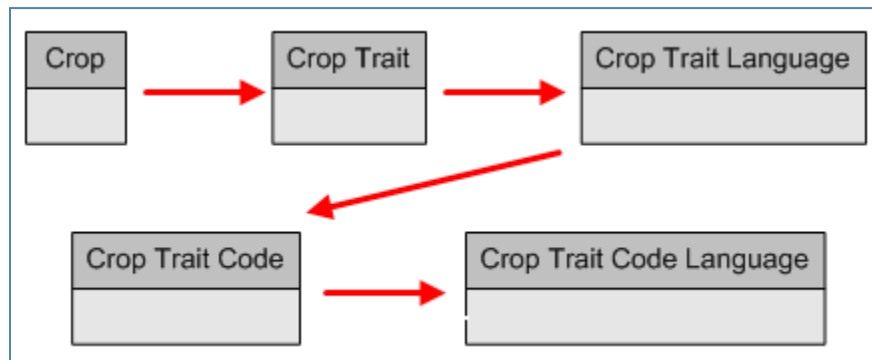
### Answer

You could not edit the descriptions because you were not in the corresponding language dataviews where these descriptions can be edited. There are two additional dataviews that are part of the “big picture,” and these are the dataviews where you can add the titles and descriptions for the Crop Traits and the Crop Trait Codes. (The reason why these additional dataviews are necessary is to allow GG to handle titles and descriptions in *any* language in the GG database.)

See the following illustration:

#### Crops and Crop Traits Overview

There are five crop-related dataviews that need to be considered when setting up the crops and crop traits. The following illustrates the general flow in inputting /editing data in the crop-related dataviews that you should follow in establishing new crop traits:



The **Crop** dataview is the “grand” parent dataview. That is, if you don’t have the crop defined in the Crop dataview, you cannot enter in any of the traits related to the crop or the various possible code values that each trait can handle. Conversely, you cannot delete a crop from the Crop table if it has traits associated to it. Similarly, traits cannot be removed from the Crop Trait dataview unless all of the dependent data in the children dataviews has been removed first.

So the direct answer to the question “...I can add the `crop_trait`, but not the description, that area is grayed out. I can add the `crop_trait_code`, but not the code description, also grayed out...” If you open the two ...language dataviews, you will be able to edit the descriptions.

Here's the final result after a new FRUITSHAPE Code Value is added for Pineapple:

Crop Trait Code Lang ID	Crop	Crop Trait	Trait Coded Name	Crop Trait Code	Trait Title	Trait Description
4713	PINEAPPLE	FRUITEYES	FRUITEYES	2 - MODERATE	FRUITEYES	FRUIT EYES
4714	PINEAPPLE	FRUITEYES	FRUITEYES	3 - DEEP	FRUITEYES	FRUIT EYES
4699	PINEAPPLE	FRUITSHAPE	FRUITSHAPE	1 - CYLINDRICAL	FRUITSHAPE	FRUIT SHAPE
4700	PINEAPPLE	FRUITSHAPE	FRUITSHAPE	2 - CONICAL	FRUITSHAPE	FRUIT SHAPE
20122	PINEAPPLE	FRUITSHAPE	FRUITSHAPE	3 - ROUND	FRUITSHAPE	FRUIT SHAPE
21716	PINEAPPLE	FRUITSHAPE	FRUITSHAPE	4 - SQUARE	FRUITSHAPE	FRUIT SHAPE
4708	PINEAPPLE	OFFFLAVOR	OFFFLAVOR	1 - YES	OFFFLAVOR	PRESENCE OR ABSENCE OF OFF
4709	PINEAPPLE	OFFFLAVOR	OFFFLAVOR	2 - NO	OFFFLAVOR	PRESENCE OR ABSENCE OF OFF

In the Crop Trait Code Lang dataview, the Code Title and the Code Description are not grayed out, hence they can be edited:

Trait Title	Trait Description	Language	Code Title	Code Description	Created Date	Created By
FRUITEYES	FRUIT EYES	English	2	MODERATE	8/12/1994 9:47 ...	Bohning, Mark A...
FRUITEYES	FRUIT EYES	English	3	DEEP	8/12/1994 9:47 ...	Bohning, Mark A...
FRUITSHAPE	FRUIT SHAPE	English	1	CYLINDRICAL	8/12/1994 9:47 ...	Bohning, Mark A...
FRUITSHAPE	FRUIT SHAPE	English	2	CONICAL	8/12/1994 9:47 ...	Bohning, Mark A...
FRUITSHAPE	FRUIT SHAPE	English	3	ROUND	6/11/2009	Mayo-Riley, Carol...
FRUITSHAPE	FRUIT SHAPE	English	4	SQUARE	5/15/2012 4:55 ...	Reisinger, Martin...
OFFFLAVOR	PRESENCE OR ABSENCE OF OFF	English	1	YES	8/12/1994 9:47 ...	Bohning, Mark A...
OFFFLAVOR	PRESENCE OR ABSENCE OF OFF	English	2	NO	8/12/1994 9:47 ...	Bohning, Mark A...

[Return to TOC](#)

**Question**

**How can I determine what are all the possible coded values for a trait?**

**Answer**

Set up List in the CT. Start by dragging the Crop item to a list. That will automatically include all of the Crop's traits. Then select a trait. On the CT right panel, the data grid, select the **Crop Trait Codes** dataview. You do not even need to use the Search Tool, because of the way the Crop items work. More details are in the [Crop \(Observations & Descriptors\) Guide](#).

[Return to TOC](#)

## Traits: Relating Traits That Apply Universally to an Accession

### Question

**If an accession has multiple inventories, will we need to copy these “passport-like” traits repeated for each inventory?**

### Answer

No. Use the Accession’s system inventory (\*\*) record to connect passport-like traits to the accession. This saves you from copying a trait to all the inventory records. An example of this is the race trait in maize.

[Return to TOC](#)

## Excluding Crops

### Question

**If I have two or more crops in my GRIN-Global database, how can we "block" out a crop to Curator Tool users who will not need to be reviewing that crops’ information? For example, genebank wheat users do not need to see the maize information. Is this possible?**

### Answer

Unfortunately, you can’t exclude by CROP at this time. However, as an alternative, the administrator can set up exclusions by Taxonomy Family (Families). The admin would use the CT to search by taxon – in the Family Dataview. He can search and pull the Accessions records of that family (or families) into the CT from the Search Tool, and then invoke the security permissions to “deny” (Read/Write/Update/Delete) all of those accession records to specified users. The excluded user would then no longer see records of that Family. (Note: this is rarely done.)

Ultimately ownership is the way to control access to those accessions.

[Return to TOC](#)

---

# Images

## Question

**How do you load images into GRIN-Global?**

## Answer

Images can be attached to accessions and inventories via the accession\_inv\_attach dataview.

Beginning in CT v1.21.10.4, other attachments may be made. Refer to the [Attachment Wizard Guide](#).

[Return to TOC](#)

---

## Installation Questions

### Question

#### What do I need to install in order to access GRIN-Global?

“It depends.” Here are the typical configurations:

Configuration	GG Components Installed on User’s PC
Your organization’s GRIN-Global data is stored on a server. You will use your PC to input and edit the data on the server. You need to install the Curator Tool.	The Curator Tool (CT). (During the CT installation, the Search Tool, “Lookup tables,” the Crystal Reports Viewer and a copy of SQL Server will also be installed.) A CT self-extracting (.exe) installation file is available on the USDA GG website on the <a href="#">CT Installation</a> page.
Your organization’s GRIN-Global data is stored on a server and your organization is using the GRIN-Global Public website. You are not intending to add/edit GG data – <i>you just want to view data.</i>	No GG components are required on the user’s PC – only a standard browser (such as Internet Explorer, Firefox, or Chrome) is needed to access the Public Website.
Your PC will serve a dual purpose: you will input and access the GG data, but the PC will also be the repository for the data.  This is a very rare situation.	GRIN-Global Updater Program*; The Updater will generally install the GG Admin Tool; a database product: (SQL Server, Oracle, MySQL, or PostgreSQL); and a basic GG database. Some additional prerequisite Microsoft software is also loaded during the GG installation process

\* The GRIN-Global Updater program must be installed first before the GRIN-Global *server* components are installed. Complete installation directions are in [GG Server Installation](#) document.

[Return to TOC](#)